



12,226
Sheltered

The 2015 Greater Los Angeles Homeless Count took place on January 27-29th, 2015; it is the largest homeless census in the country.

These results cover the Greater Los Angeles Continuum of Care, which includes all of LA County except the cities of Long Beach, Pasadena, and Glendale.

Homeless persons enumerated in 2015 are twice as likely to be unsheltered



28,948
Unsheltered

41,174 total # of persons

Homelessness has increased by 16% since 2013

Homelessness by Household Type



81%
Single Adults

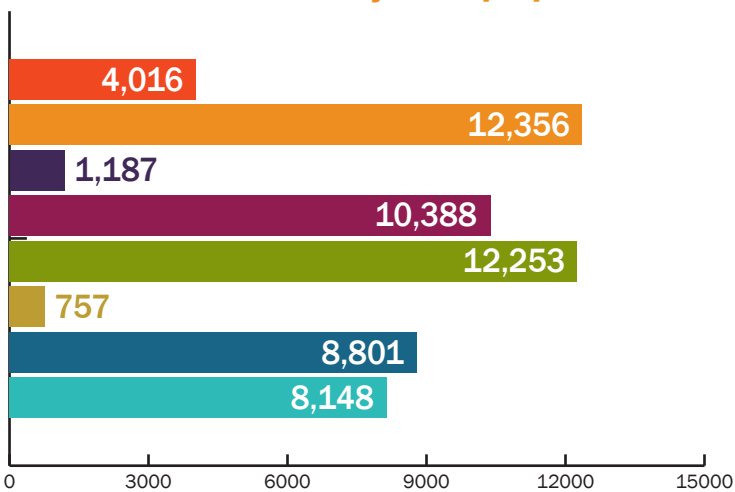


18%
Family Members

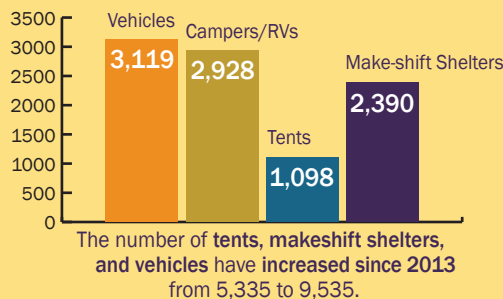


1%
Unaccompanied Children

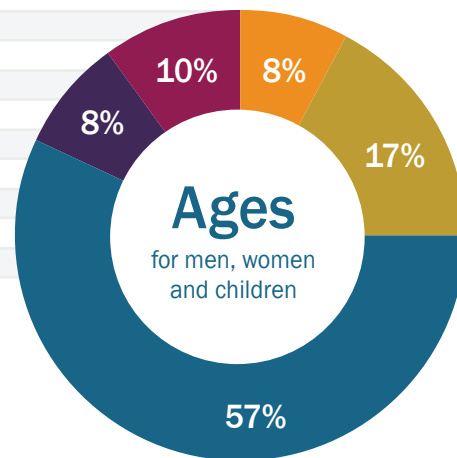
Homelessness by Subpopulation



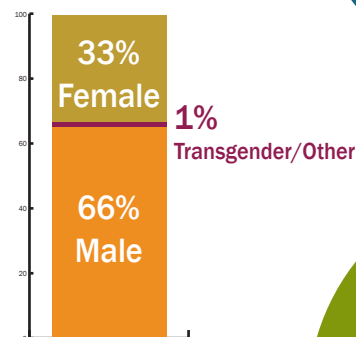
Despite the increase in the overall population, homelessness among **veterans** has remained relatively flat since 2013



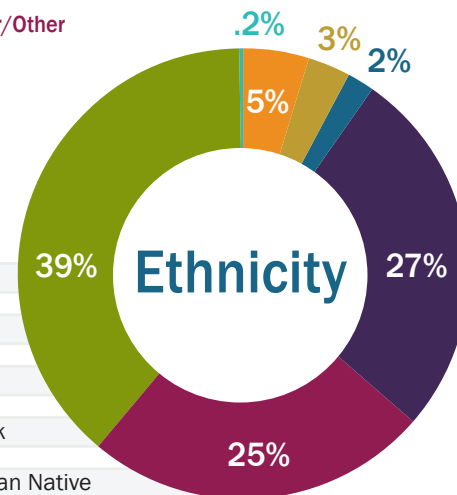
- 62 & Older
- 55-61
- 25-54
- 18-24
- Under 18



Gender



- Multi-Racial/Other
- Hispanic/Latino
- White/Caucasian
- African-American/Black
- American Indian/Alaskan Native
- Asian/Pacific Islander
- Native Hawaiian/Other Pacific Islander





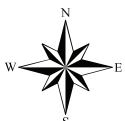
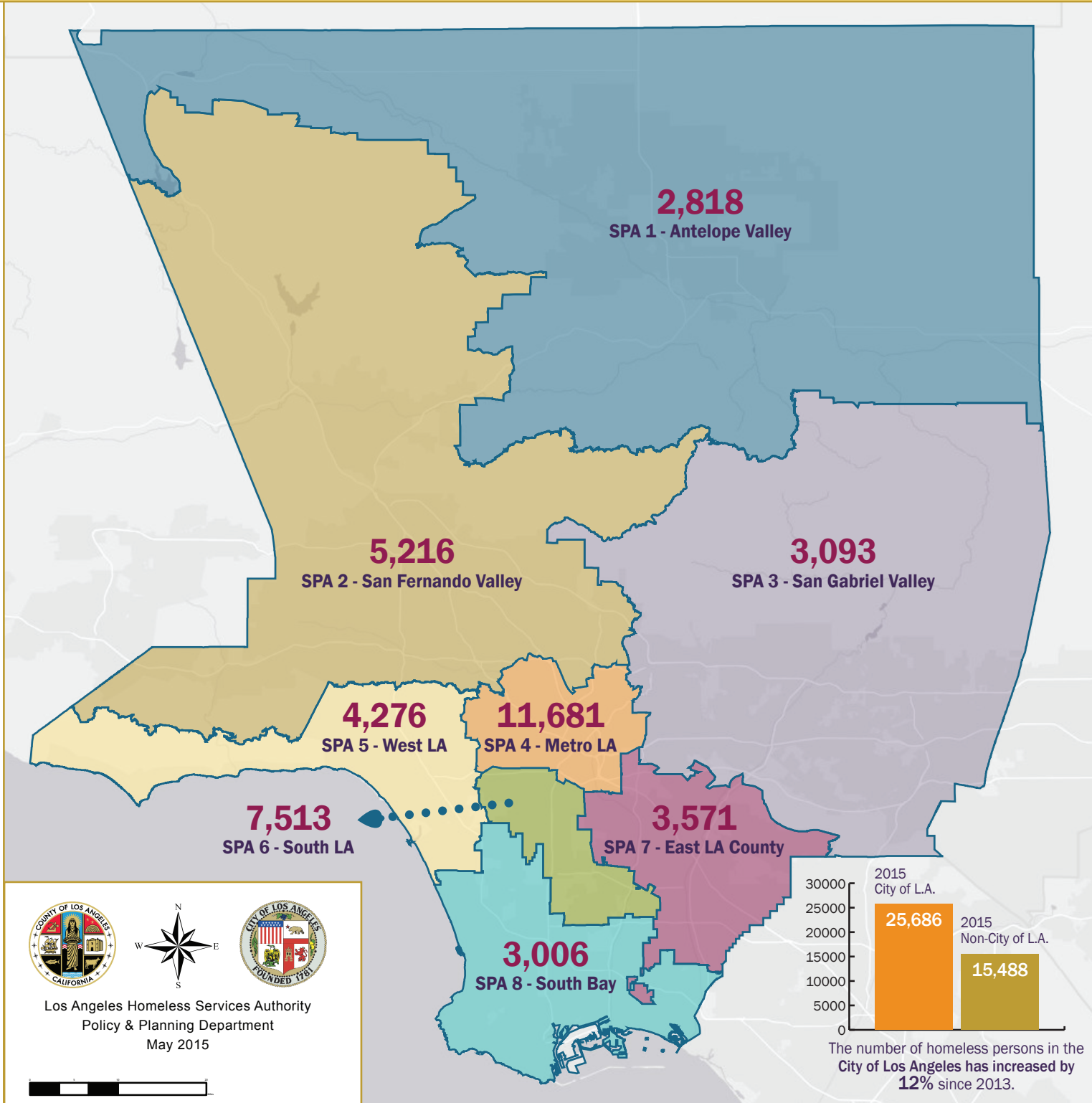
2015 Greater Los Angeles

Homeless Count Results

LAHSA

Service Planning Areas (SPAs)

LA Continuum of Care totals only; does not include data from Long Beach, Pasadena, and Glendale



Los Angeles Homeless Services Authority
Policy & Planning Department
May 2015



@HomelessCountLA

www.facebook.com/lahsa.org



Los Angeles Homeless Service Authority

811 Wilshire Blvd. 6th Floor • Los Angeles • CA 90017

Homeless Count Headquarters: 213-225-6562

email: homelesscount@lahsa.org



www.lahsa.org