

OWNER
STRAND & PIER HOLDING CO. LLC
8383 WILSHIRE BLVD, SUITE 920
BEVERLY HILLS, CA 90211

DEVELOPER
BOLOUR ASSOCIATES, INC.
8383 WILSHIRE BLVD, SUITE 920
BEVERLY HILLS, CA 90211

ARCHITECT
HKS ARCHITECTS, INC.
539 BRYANT STREET, SUITE 100
SAN FRANCISCO, CA 94107

STRUCTURAL ENGINEER
ENGLERKIRK STRUCTURAL ENGINEERS
888 S. FIGUEROA ST. 18TH FLOOR
LOS ANGELES, CA 90017

MEP
GLUMAC ENGINEERS
18200 WYN KARMEN AVE - SUITE 100
IRVINE, CA 92612

LANDSCAPE ARCHITECT
AHBE
617 WEST 7TH STREET - SUITE 304
LOS ANGELES, CA 90017

HOTEL OPERATOR
PROVENANCE HOTELS
U.S. BANCORP TOWER
111 SW 5TH AVE - SUITE 1001
PORTLAND, OR 97205

LAND-USE CONSULTANT
THREE6IXTY
4309 OVERLAND AVENUE
CULVER CITY, CA 90230

CIVIL ENGINEER CONSULTANT
FUSCOE ENGINEERING
600 WILSHIRE BLVD, SUITE 1470
LOS ANGELES, CA 90017

STRAND & PIER HOTEL HERMOSA BEACH

HKS PROJECT NUMBER

17377

DATE

DECEMBER 2, 2015

ISSUE

ENTITLEMENT SUBMITTAL

SHEET TITLE

LEVEL 01

FLOOR PLAN

SHEET NO.

A201

KEY

ROOM NAME	S.F.	S.F. - SQUARE FEET
	O.G.	O.G. - OCCUPANCY GROUP
	L.F.	L.F. - LOAD FACTOR
	O.L.	O.L. - OCCUPANCY LOAD



OCCUPANCY - LEVEL 01

NOTE: ALL ELEVATIONS FROM ASSUMED 0'-0" DATUM AT GROUND LEVEL (+14.6' ACTUAL)

SCALE: 1" = 10'
0 5 10ft



OWNER
STRAND & PIER HOLDING CO. LLC
8383 WILSHIRE BLVD, SUITE 920
BEVERLY HILLS, CA 90211

DEVELOPER
BOLOUR ASSOCIATES, INC.
8383 WILSHIRE BLVD, SUITE 920
BEVERLY HILLS, CA 90211

ARCHITECT
HKS ARCHITECTS, INC.
539 BRYANT STREET, SUITE 100
SAN FRANCISCO, CA 94107

STRUCTURAL ENGINEER
ENGLERKIRK STRUCTURAL ENGINEERS
888 S. FIGUEROA ST. 18TH FLOOR
LOS ANGELES, CA 90017

MEP
GLUMAC ENGINEERS
18200 VON KARMEN AVE - SUITE 100
IRVINE, CA 92612

LANDSCAPE ARCHITECT
AHBE
617 WEST 7TH STREET - SUITE 304
LOS ANGELES, CA 90017

HOTEL OPERATOR
PROVENCE HOTELS
U.S. BANCORP TOWER
111 SW 5TH AVE - SUITE 1001
PORTLAND, OR 97205

LAND-USE CONSULTANT
THREE6IXTY
4309 OVERLAND AVENUE
CULVER CITY, CA 90230

CIVIL ENGINEER CONSULTANT
FUSCOE ENGINEERING
600 WILSHIRE BLVD, SUITE 1470
LOS ANGELES, CA 90017

STRAND & PIER HOTEL HERMOSA BEACH

HKS PROJECT NUMBER

17377

DATE

DECEMBER 2, 2015

ISSUE

ENTITLEMENT SUBMITTAL

SHEET TITLE

FLOOR PLAN

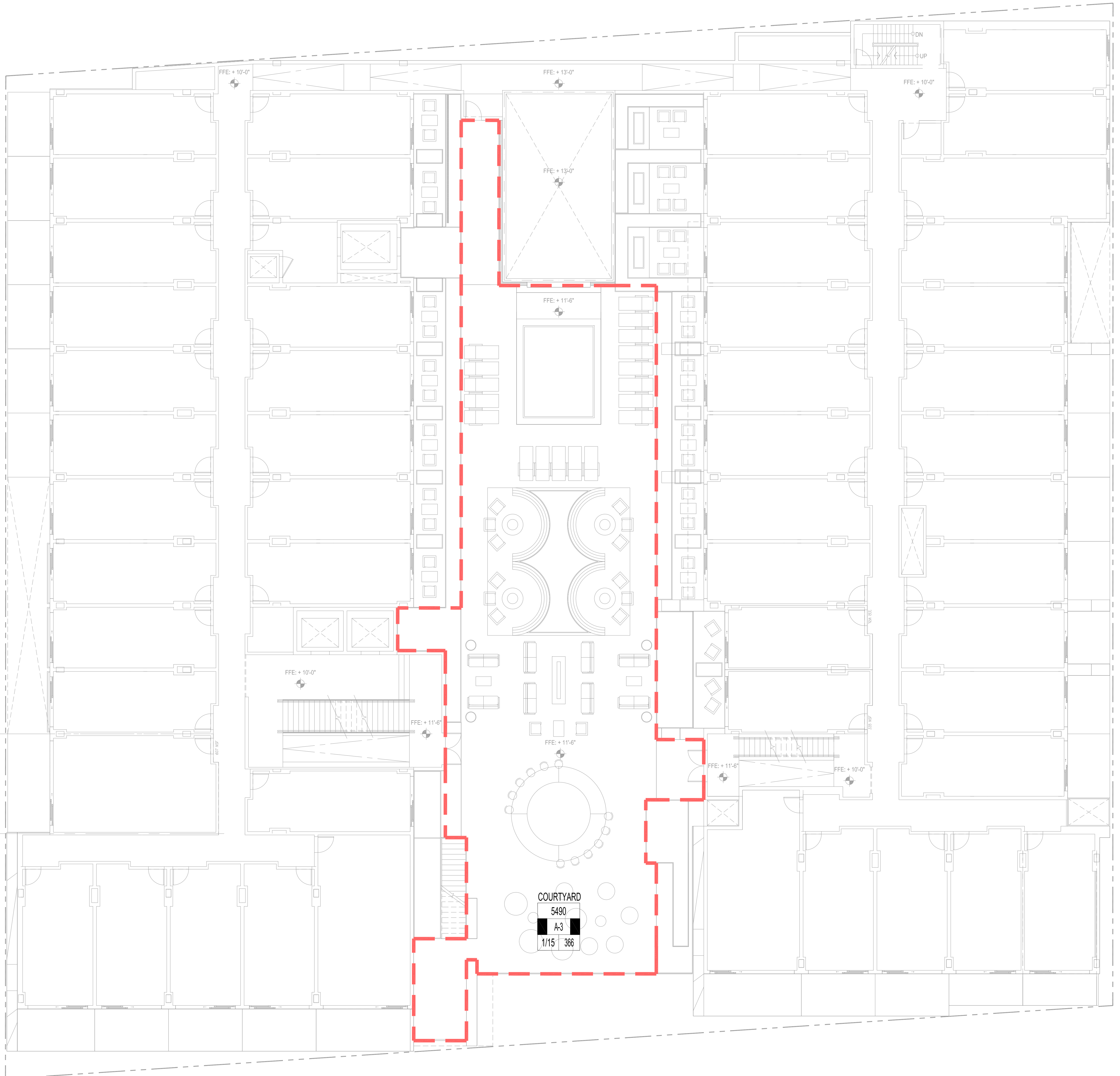
LEVEL 02

SHEET NO.

A202

KEY

ROOM NAME	
S.F.	S.F. - SQUARE FEET
O.G.	O.G. - OCCUPANCY GROUP
L.F.	L.F. - LOAD FACTOR
OL	O.L. - OCCUPANCY LOAD



NOTE: ALL ELEVATIONS FROM ASSUMED 0'-0" DATUM AT GROUND LEVEL (+14.6' ACTUAL)

PROJECT NORTH

SCALE: 1" = 10'
0 5 10ft

OCCUPANCY - LEVEL 02

OWNER
STRAND & PIER HOLDING CO. LLC
8383 WILSHIRE BLVD, SUITE 920
BEVERLY HILLS, CA 90211

DEVELOPER
BOLOUR ASSOCIATES, INC.
8383 WILSHIRE BLVD, SUITE 920
BEVERLY HILLS, CA 90211

ARCHITECT
HKS ARCHITECTS, INC.
539 BRYANT STREET, SUITE 100
SAN FRANCISCO, CA 94107

STRUCTURAL ENGINEER
ENGLERKIRK STRUCTURAL ENGINEERS
888 S. FIGUEROA ST. 18TH FLOOR
LOS ANGELES, CA 90017

MEP
GLUMAC ENGINEERS
18200 VON KARMEN AVE - SUITE 100
IRVINE, CA 92612

LANDSCAPE ARCHITECT
AHBE
617 WEST 7TH STREET - SUITE 304
LOS ANGELES, CA 90017

HOTEL OPERATOR
PROVENANCE HOTELS
U.S. BANCORP TOWER
111 SW 5TH AVE - SUITE 1001
PORTLAND, OR 97205

LAND-USE CONSULTANT
THREE6IXTY
4309 OVERLAND AVENUE
CULVER CITY, CA 90230

CIVIL ENGINEER CONSULTANT
FUSCOE ENGINEERING
600 WILSHIRE BLVD, SUITE 1470
LOS ANGELES, CA 90017

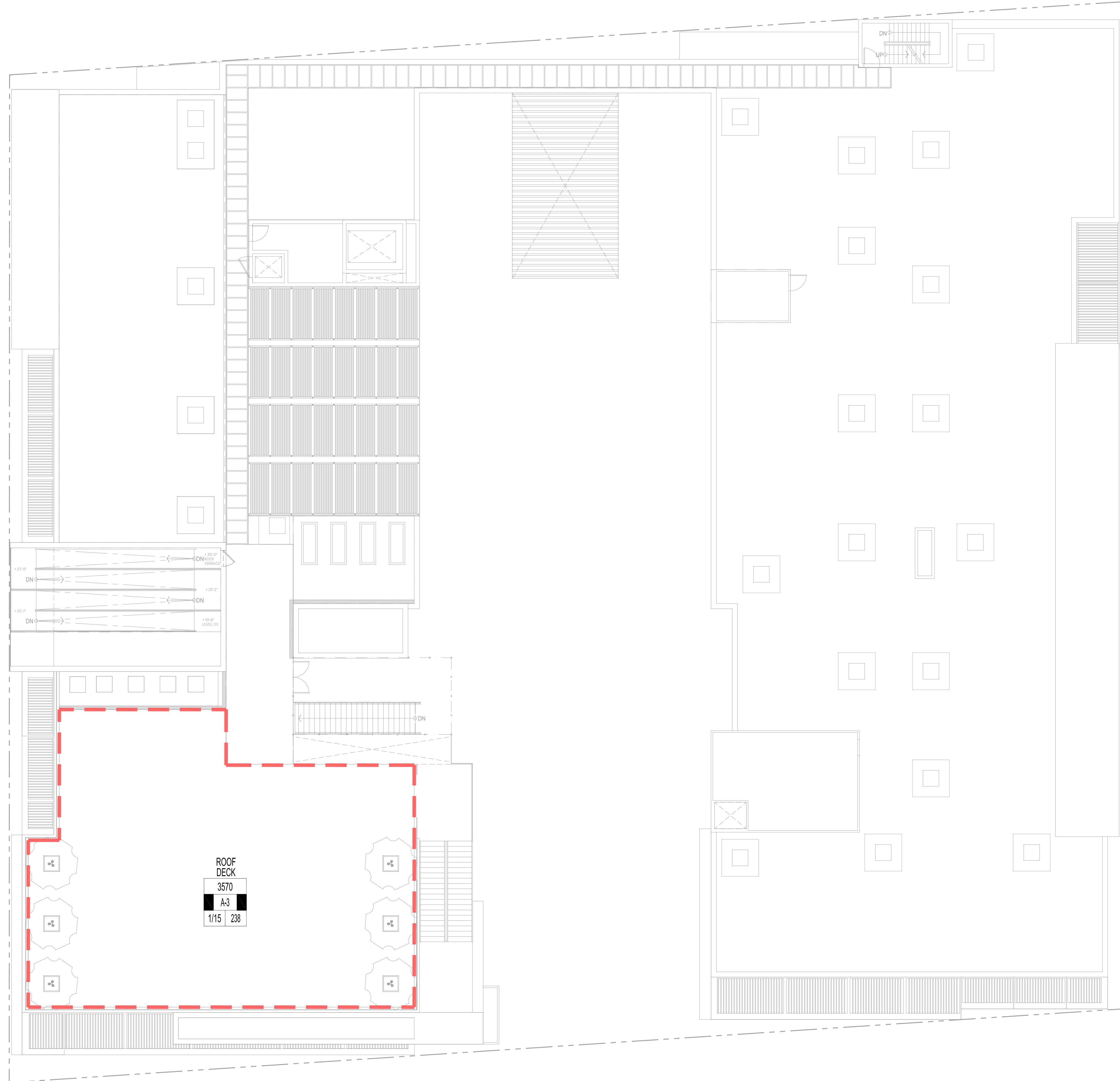
STRAND & PIER HOTEL HERMOSA BEACH

HKS PROJECT NUMBER
17377
DATE
DECEMBER 2, 2015
ISSUE
ENTITLEMENT SUBMITTAL
SHEET TITLE
ROOF TERRACE PLAN

SHEET NO.
A204

KEY

ROOM NAME	S.F.	O.G.	L.F.	OL
	S.F. - SQUARE FEET	O.G. - OCCUPANCY GROUP	L.F. - LOAD FACTOR	OL - OCCUPANCY LOAD



ROOF DECK
3570
A-3
1/15 238

NOTE: ALL ELEVATIONS FROM ASSUMED 0'-0" DATUM AT GROUND LEVEL (+14.6' ACTUAL)

PROJECT NORTH

SCALE: 1" = 10'
0 5 10ft

OCCUPANCY - ROOF