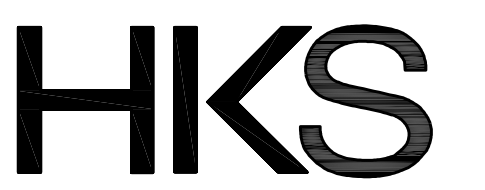




LIGHTING SHEET INDEX:

LT000: COVER SHEET
 LT100: COMPOSITE LIGHTING PLAN CONCEPTS
 LT101: OVERALL FIRST FLOOR LIGHTING PLAN CONCEPTS
 LT102: ENLARGED FIRST FLOOR LIGHTING PLAN CONCEPTS
 LT103: ENLARGED FIRST FLOOR LIGHTING PLAN CONCEPTS
 LT104: ENLARGED FIRST FLOOR LIGHTING PLAN CONCEPTS
 LT201: OVERALL SECOND FLOOR LIGHTING PLAN CONCEPTS
 LT301: OVERALL ROOF LIGHTING PLAN CONCEPTS

LT101.1: OVERALL FIRST FLOOR LIGHTING PLAN
 LT101.2: OVERALL FIRST FLOOR LIGHTING PLAN PHOTOMETRIC STUDY
 LT201.1: OVERALL SECOND FLOOR LIGHTING PLAN
 LT201.2: OVERALL SECOND FLOOR LIGHTING PLAN PHOTOMETRIC STUDY
 LT301.1: OVERALL ROOF LIGHTING PLAN
 LT301.2: OVERALL ROOF LIGHTING PLAN PHOTOMETRIC STUDY
 LT400: LIGHTING FIXTURE SCHEDULE



OWNER
 STRAND & PIER HOLDING CO. LLC
 8383 WILSHIRE BLVD, SUITE 920
 BEVERLY HILLS, CA 90211

DEVELOPER
 BOLOUR ASSOCIATES, INC.
 8383 WILSHIRE BLVD, SUITE 920
 BEVERLY HILLS, CA 90211

ARCHITECT
 HKS ARCHITECTS, INC.
 539 BRYANT STREET, SUITE 100
 SAN FRANCISCO, CA 94107

STRUCTURAL ENGINEER
 ENGLEKIRK STRUCTURAL ENGINEERS
 888 S. FIGUEROA ST. 18TH FLOOR
 LOS ANGELES, CA 90017

MEP
 GLUMAC ENGINEERS
 18200 VON KARMEN AVE - SUITE 100
 IRVINE, CA 92612

LANDSCAPE ARCHITECT
 AHBE
 617 WEST 7TH STREET - SUITE 304
 LOS ANGELES, CA 90017

HOTEL OPERATOR
 PROVENCE HOTELS
 U.S. BANCORP TOWER
 111 SW 5TH AVE - SUITE 1001
 PORTLAND, OR 97205

LAND-USE CONSULTANT
 THREE6IXTY
 4309 OVERLAND AVENUE
 CULVER CITY, CA 90230

CIVIL ENGINEER CONSULTANT
 FUSCOE ENGINEERING
 600 WILSHIRE BLVD, SUITE 1470
 LOS ANGELES, CA 90017

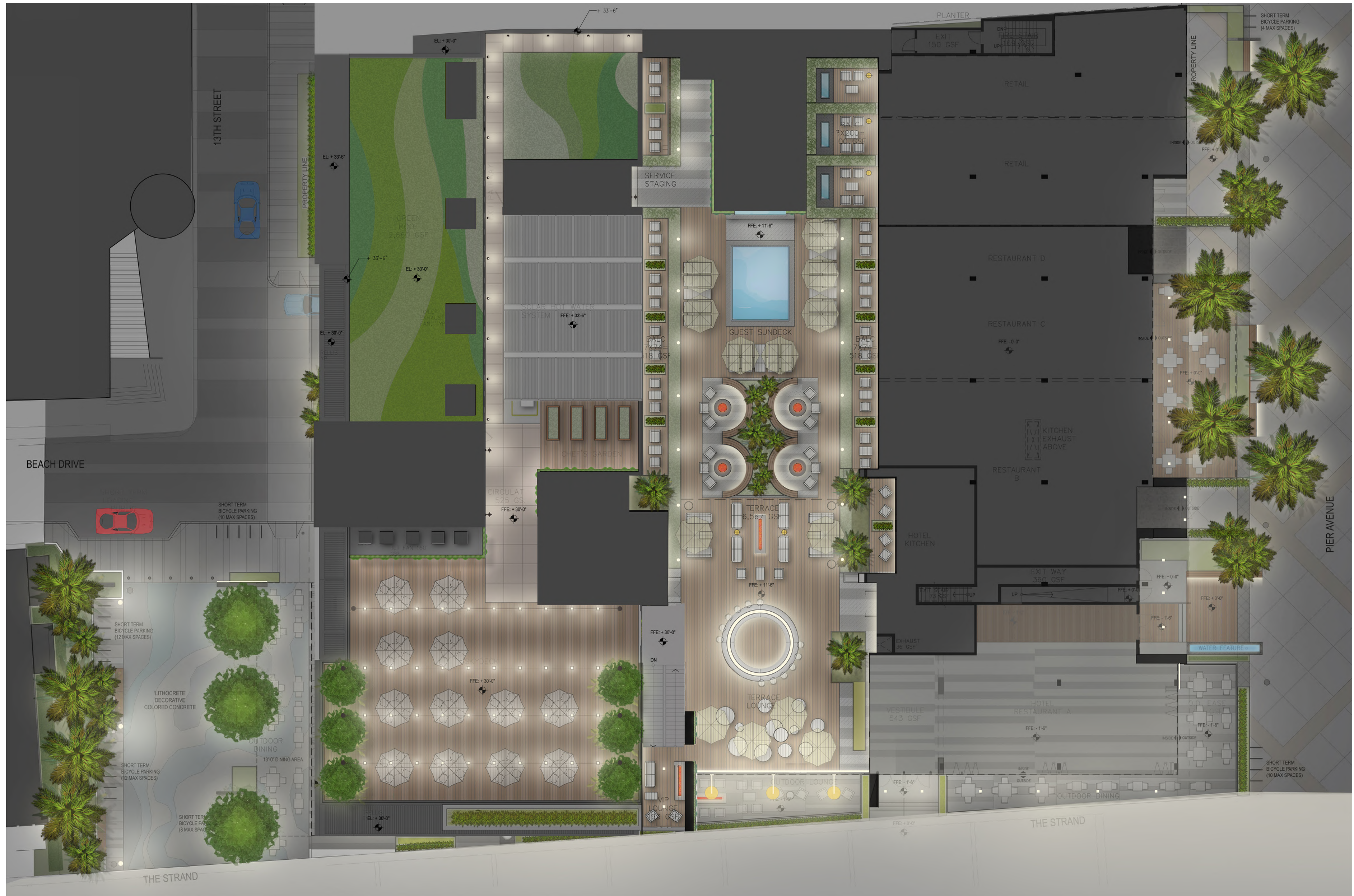
LIGHTING CONSULTANT
 KGM ARCHITECTURAL LIGHTING
 270 CORAL CIRCLE
 EL SEGUNDO, CALIFORNIA

**STRAND & PIER HOTEL
 HERMOSA BEACH**

HKS PROJECT NUMBER
 17377
 DATE
 MARCH 01, 2016
 ISSUE
 ENTITLEMENT SUBMITTAL
 SHEET TITLE
 COVER SHEET -
 LIGHTING

SHEET NO.
LT000

COMPOSITE LIGHTING PLAN



OWNER
STRAND & PIER HOLDING CO. LLC
8383 WILSHIRE BLVD, SUITE 920
BEVERLY HILLS, CA 90211

DEVELOPER
BOLOUR ASSOCIATES, INC.
8383 WILSHIRE BLVD, SUITE 920
BEVERLY HILLS, CA 90211

ARCHITECT
HKS ARCHITECTS, INC.
539 BRYANT STREET, SUITE 100
SAN FRANCISCO, CA 94107

STRUCTURAL ENGINEER
ENGLERKIRK STRUCTURAL ENGINEERS
888 S. FIGUEROA ST. 18TH FLOOR
LOS ANGELES, CA 90017

MEP
GLUMAC ENGINEERS
18200 VON KARMEN AVE - SUITE 100
IRVINE, CA 92612

LANDSCAPE ARCHITECT
AHBE
617 WEST 7TH STREET - SUITE 304
LOS ANGELES, CA 90017

HOTEL OPERATOR
PROVENCE HOTELS
U.S. BANCORP TOWER
111 SW 5TH AVE - SUITE 1001
PORTLAND, OR 97205

LAND-USE CONSULTANT
THREE6IXTY
4309 OVERLAND AVENUE
CULVER CITY, CA 90230

CIVIL ENGINEER CONSULTANT
FUSCOE ENGINEERING
600 WILSHIRE BLVD, SUITE 1470
LOS ANGELES, CA 90017

LIGHTING CONSULTANT
KGM ARCHITECTURAL LIGHTING
270 CORAL CIRCLE
EL SEGUNDO, CALIFORNIA

STRAND & PIER HOTEL HERMOSA BEACH

HKS PROJECT NUMBER
17377
DATE
MARCH 01, 2016
ISSUE
ENTITLEMENT SUBMITTAL
SHEET TITLE
COMPOSITE
LIGHTING
PLAN CONCEPT
SHEET NO.
LT100

GROUND LEVEL LIGHTING PLAN



OWNER
STRAND & PIER HOLDING CO. LLC
8383 WILSHIRE BLVD, SUITE 920
BEVERLY HILLS, CA 90211

DEVELOPER
BOLOUR ASSOCIATES, INC.
8383 WILSHIRE BLVD, SUITE 920
BEVERLY HILLS, CA 90211

ARCHITECT
HKS ARCHITECTS, INC.
539 BRYANT STREET, SUITE 100
SAN FRANCISCO, CA 94107

STRUCTURAL ENGINEER
ENGLERKIRK STRUCTURAL ENGINEERS
888 S. FIGUEROA ST. 18TH FLOOR
LOS ANGELES, CA 90017

MEP
GLUMAC ENGINEERS
18200 VON KARMEN AVE - SUITE 100
IRVINE, CA 92612

LANDSCAPE ARCHITECT
AHBE
617 WEST 7TH STREET - SUITE 304
LOS ANGELES, CA 90017

HOTEL OPERATOR
PROVENCE HOTELS
U.S. BANCORP TOWER
111 SW 5TH AVE - SUITE 1001
PORTLAND, OR 97205

LAND-USE CONSULTANT
THREE SIXTY
4309 OVERLAND AVENUE
CULVER CITY, CA 90230

CIVIL ENGINEER CONSULTANT
FUSCOE ENGINEERING
600 WILSHIRE BLVD, SUITE 1470
LOS ANGELES, CA 90017

LIGHTING CONSULTANT
KGM ARCHITECTURAL LIGHTING
270 CORAL CIRCLE
EL SEGUNDO, CALIFORNIA

STRAND & PIER HOTEL HERMOSA BEACH

HKS PROJECT NUMBER

17377

DATE

MARCH 01, 2016

ISSUE

ENTITLEMENT SUBMITTAL

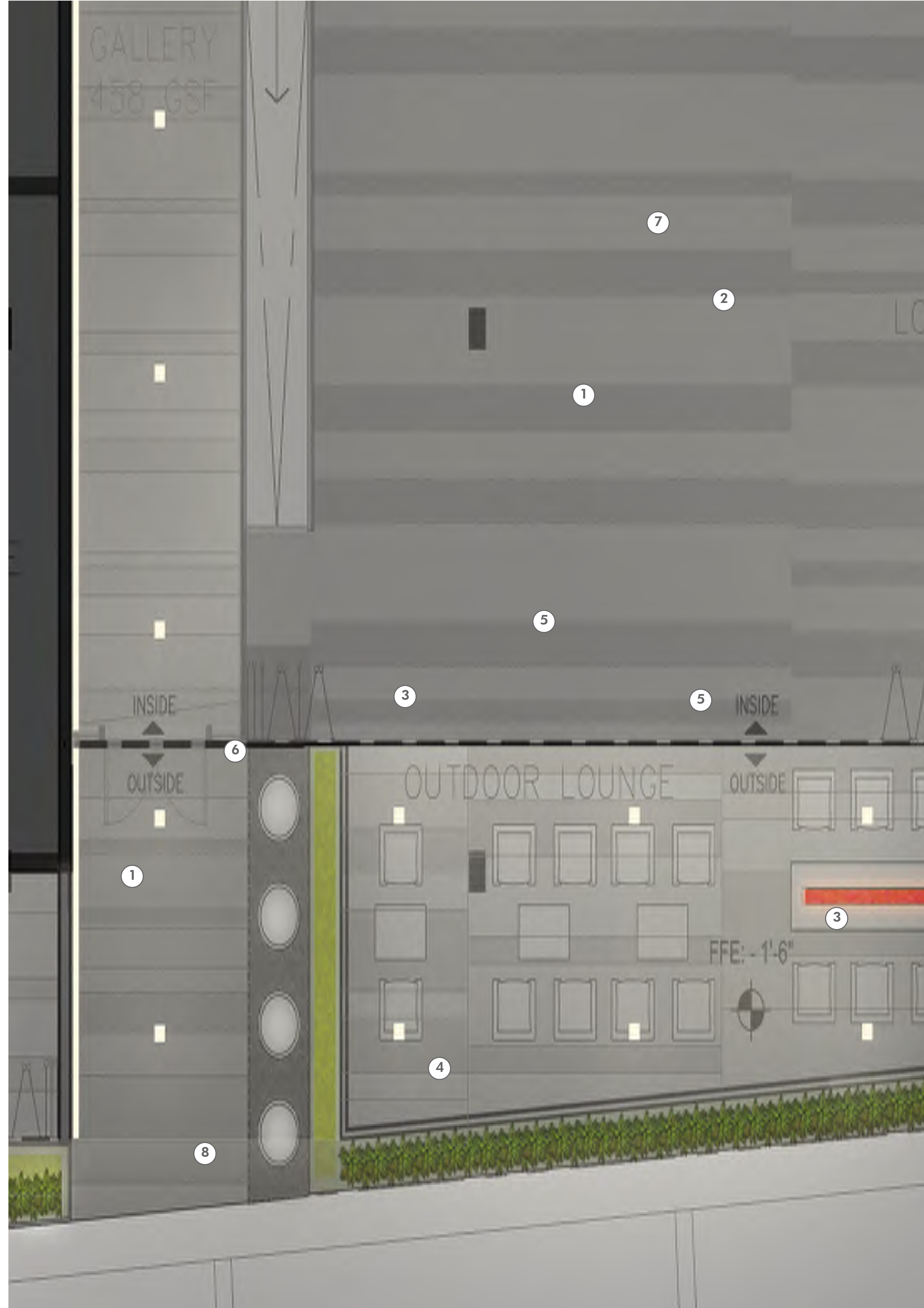
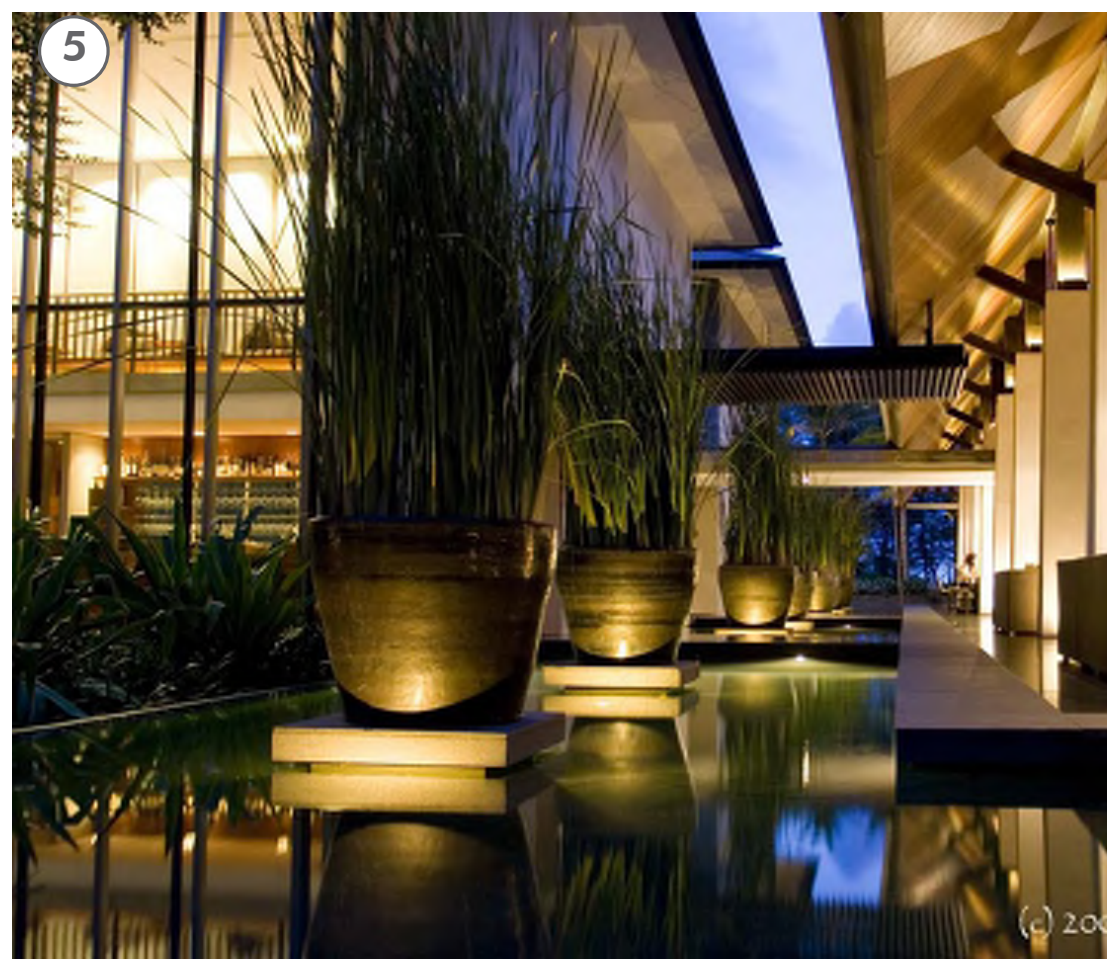
SHEET TITLE

OVERALL FIRST
FLOOR
LIGHTING PLAN
CONCEPT

SHEET NO.

LT101

GROUND LEVEL ENLARGEMENT / LIGHTING AT 13TH STREET PLAZA



- ① DECORATIVE PENDANT FIXTURES AT VALET
- ② UPLIGHTING AT PALM TREES
- ③ UPLIGHTING AT TREES AND LANDSCAPE
- ④ LINEAR INGRADE UPLIGHT AT FEATURE WALLS
- ⑤ INTEGRAL LIGHTING AT ARCHITECTURAL FEATURES
- ⑥ PEDESTRIAN SCALE POST LIGHTS
- ⑦ RECESSED LED DOWNLIGHTS
- ⑧ LINEAR LED LIGHTING CONCEALED AT UNDERSIDE OF BENCHES

OWNER
STRAND & PIER HOLDING CO. LLC
8383 WILSHIRE BLVD, SUITE 920
BEVERLY HILLS, CA 90211

DEVELOPER
BOLOUR ASSOCIATES, INC.
8383 WILSHIRE BLVD, SUITE 920
BEVERLY HILLS, CA 90211

ARCHITECT
HKS ARCHITECTS, INC.
539 BRYANT STREET, SUITE 100
SAN FRANCISCO, CA 94107

STRUCTURAL ENGINEER
ENGLERKIRK STRUCTURAL ENGINEERS
888 S. FIGUEROA ST. 18TH FLOOR
LOS ANGELES, CA 90017

MEP
GLUMAC ENGINEERS
18200 VON KARMEN AVE - SUITE 100
IRVINE, CA 92612

LANDSCAPE ARCHITECT
AHBE
617 WEST 7TH STREET - SUITE 304
LOS ANGELES, CA 90017

HOTEL OPERATOR
PROVENCE HOTELS
U.S. BANCORP TOWER
111 SW 5TH AVE - SUITE 1001
PORTLAND, OR 97205

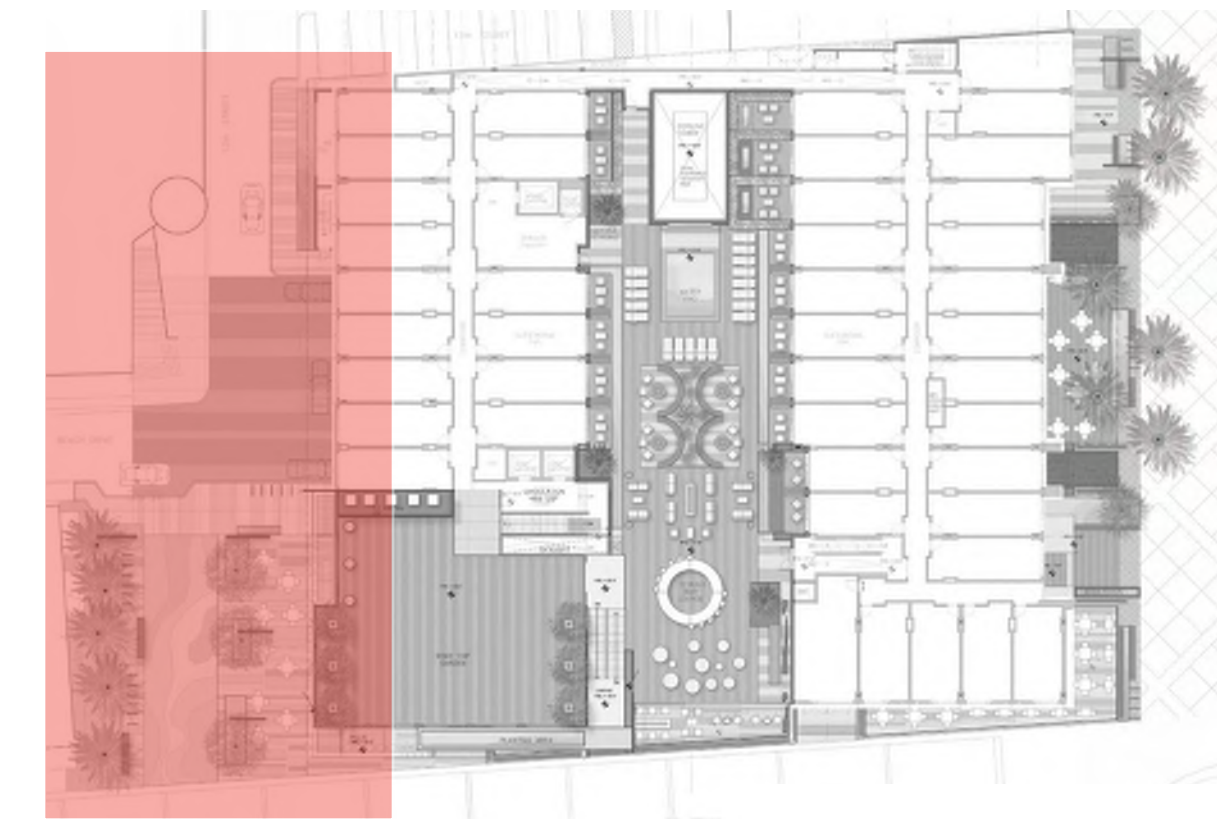
LAND-USE CONSULTANT
THREE SIXTY
4309 OVERLAND AVENUE
CULVER CITY, CA 90230

CIVIL ENGINEER CONSULTANT
FUSCOE ENGINEERING
600 WILSHIRE BLVD, SUITE 1470
LOS ANGELES, CA 90017

LIGHTING CONSULTANT
KGM ARCHITECTURAL LIGHTING
270 CORAL CIRCLE
EL SEGUNDO, CALIFORNIA

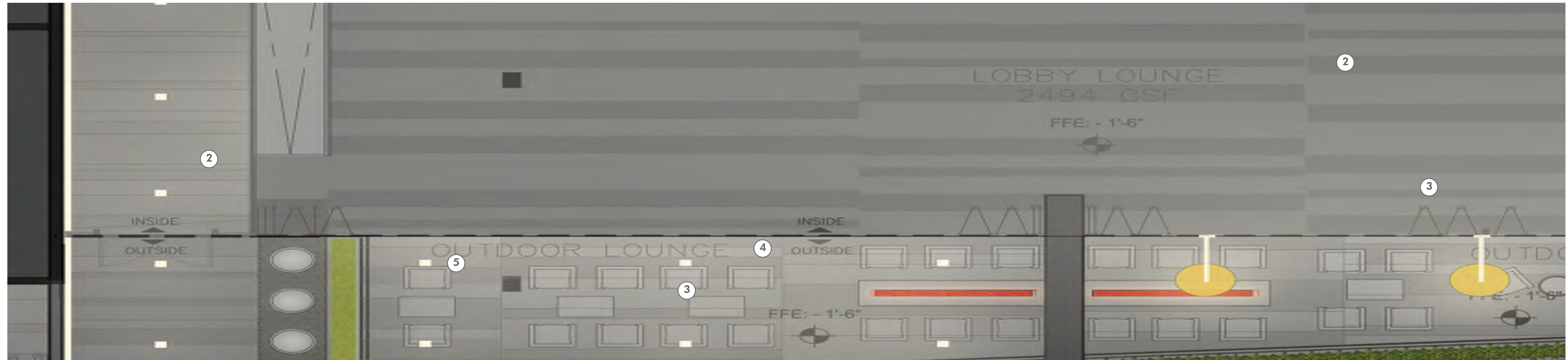
STRAND & PIER HOTEL HERMOSA BEACH

KEY MAP



HKS PROJECT NUMBER
17377
DATE
MARCH 01, 2016
ISSUE
ENTITLEMENT SUBMITTAL
SHEET TITLE
FIRST FLOOR
ENLARGEMENT
LIGHTING PLAN
CONCEPT
SHEET NO.

GROUND LEVEL ENLARGEMENT / LIGHTING AT THE STRAND



OWNER
STRAND & PIER HOLDING CO. LLC
8383 WILSHIRE BLVD, SUITE 920
BEVERLY HILLS, CA 90211

DEVELOPER
BOLOUR ASSOCIATES, INC.
8383 WILSHIRE BLVD, SUITE 920
BEVERLY HILLS, CA 90211

ARCHITECT
HKS ARCHITECTS, INC.
539 BRYANT STREET, SUITE 100
SAN FRANCISCO, CA 94107

STRUCTURAL ENGINEER
ENGLERKIRK STRUCTURAL ENGINEERS
888 S. FIGUEROA ST. 18TH FLOOR
LOS ANGELES, CA 90017

MEP
GLUMAC ENGINEERS
18200 VON KARMEN AVE - SUITE 100
IRVINE, CA 92612

LANDSCAPE ARCHITECT
AHBE
617 WEST 7TH STREET - SUITE 304
LOS ANGELES, CA 90017

HOTEL OPERATOR
PROVENCE HOTELS
U.S. BANCORP TOWER
111 SW 5TH AVE - SUITE 1001
PORTLAND, OR 97205

LAND-USE CONSULTANT
THREE6IXTY
4309 OVERLAND AVENUE
CULVER CITY, CA 90230

CIVIL ENGINEER CONSULTANT
FUSCOE ENGINEERING
600 WILSHIRE BLVD, SUITE 1470
LOS ANGELES, CA 90017

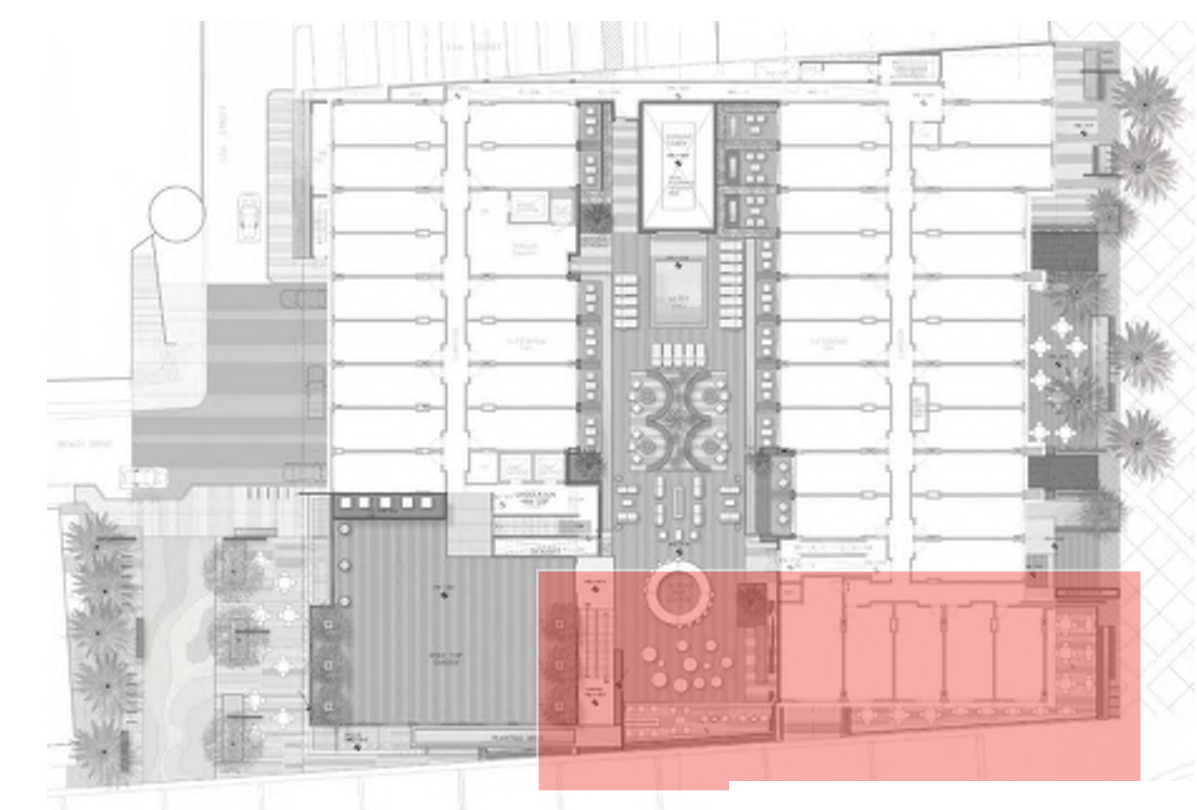
LIGHTING CONSULTANT
KGM ARCHITECTURAL LIGHTING
270 CORAL CIRCLE
EL SEGUNDO, CALIFORNIA



- ① ARCHITECTURAL FACADE TO GLOW FROM WITHIN
- ② LINEAR INGRADE UPLIGHT AT FEATURE WALL
- ③ LOW LEVEL LIGHTING AT PLANTERS
- ④ CANTILEVERED DECORATIVE PENDANTS
- ⑤ RECESSED LED DOWNLIGHTS IN ARCHITECTURAL EAVES



KEY MAP

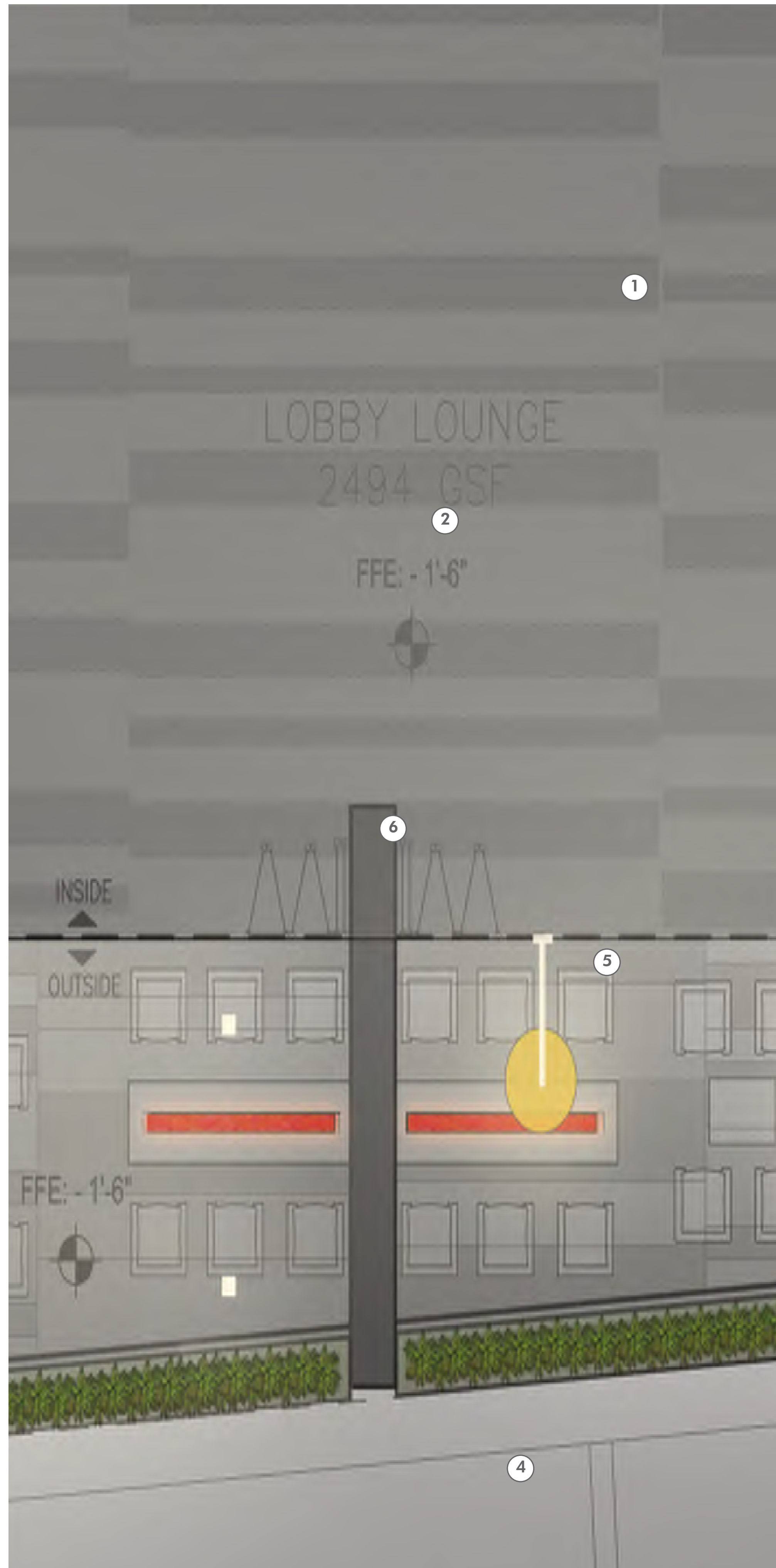
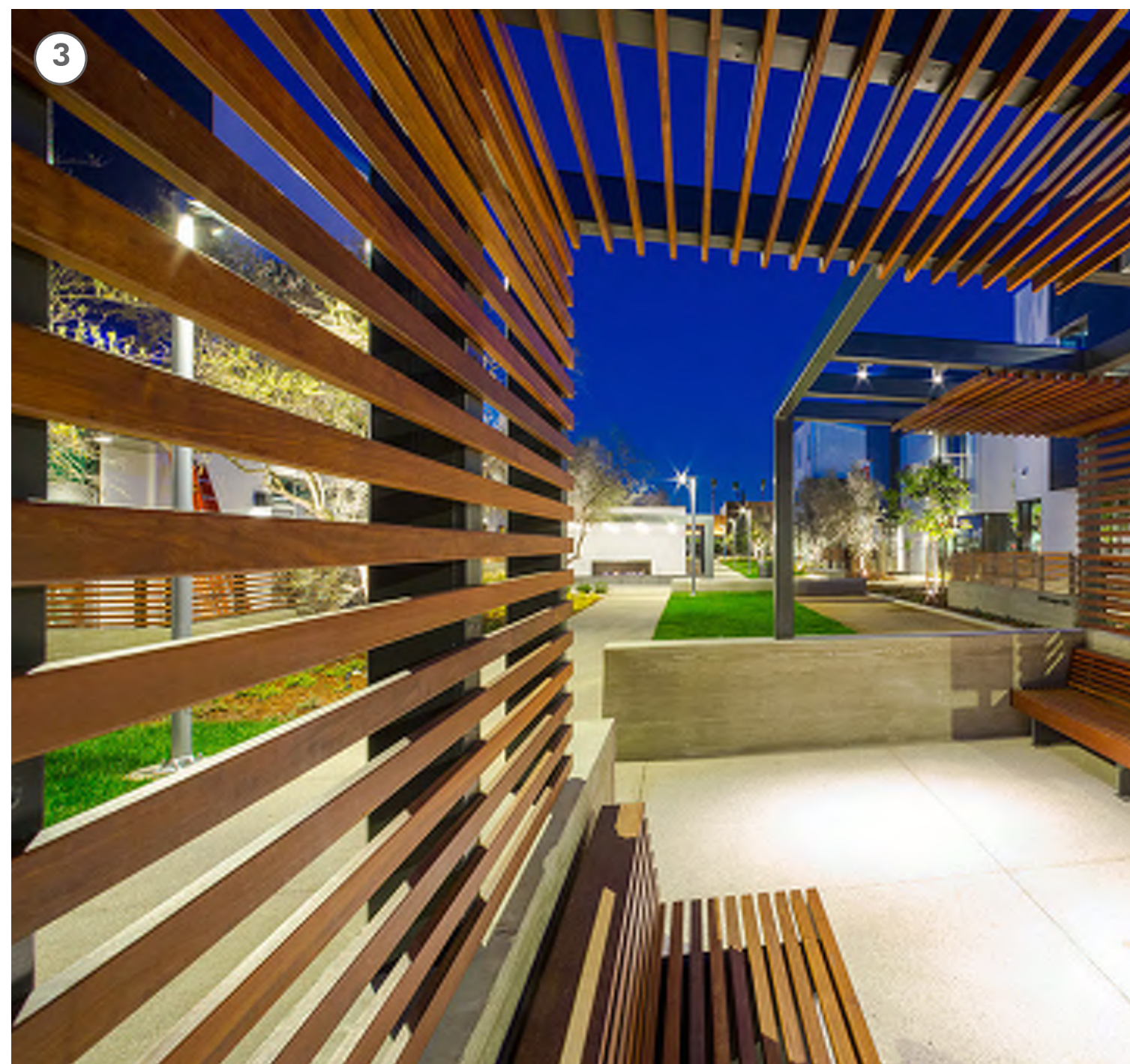


STRAND & PIER HOTEL HERMOSA BEACH

HKS PROJECT NUMBER
17377
DATE
MARCH 01, 2016
ISSUE
ENTITLEMENT SUBMITTAL
SHEET TITLE
FIRST FLOOR
ENLARGEMENT
LIGHTING PLAN
CONCEPT
SHEET NO.

LT103

GROUND LEVEL ENLARGEMENT / LIGHTING AT PIER AVENUE



- ① UPLIGHTING AT PALM TREES
- ② LOW LEVEL LIGHTING AT PLANTERS
- ③ ARCHITECTURAL FACADE TO GLOW FROM WITHIN
- ④ INTEGRAL LIGHTING AT ARCHITECTURAL FEATURES
- ⑤ LINEAR LED LIGHTING CONCEALED AT UNDERSIDE OF BENCHES
- ⑥ RECESSED LED DOWNLIGHTS IN ARCHITECTURAL EAVES

OWNER
STRAND & PIER HOLDING CO. LLC
8383 WILSHIRE BLVD, SUITE 920
BEVERLY HILLS, CA 90211

DEVELOPER
BOLOUR ASSOCIATES, INC.
8383 WILSHIRE BLVD, SUITE 920
BEVERLY HILLS, CA 90211

ARCHITECT
HKS ARCHITECTS, INC.
539 BRYANT STREET, SUITE 100
SAN FRANCISCO, CA 94107

STRUCTURAL ENGINEER
ENGLERKIRK STRUCTURAL ENGINEERS
888 S. FIGUEROA ST. 18TH FLOOR
LOS ANGELES, CA 90017

MEP
GLUMAC ENGINEERS
18200 VON KARMEN AVE - SUITE 100
IRVINE, CA 92612

LANDSCAPE ARCHITECT
AHBE
617 WEST 7TH STREET - SUITE 304
LOS ANGELES, CA 90017

HOTEL OPERATOR
PROVANCE HOTELS
U.S. BANCORP TOWER
111 SW 5TH AVE - SUITE 1001
PORTLAND, OR 97205

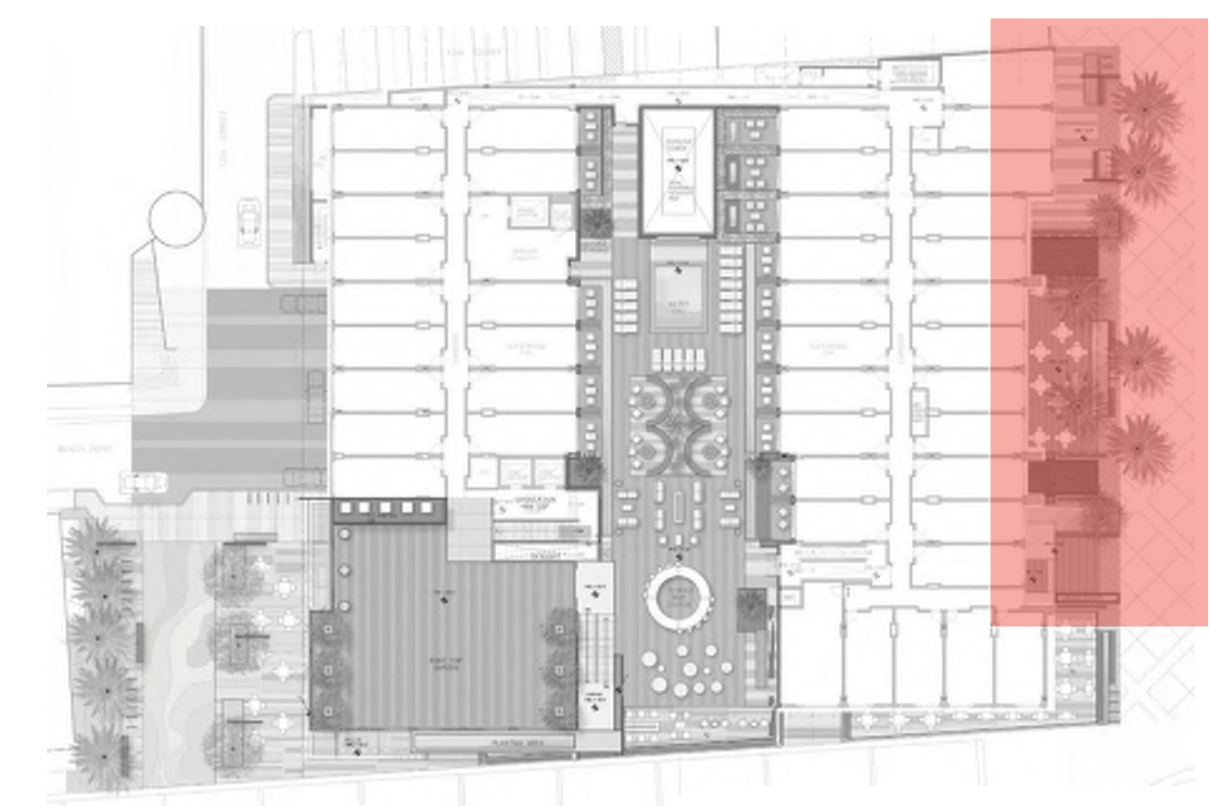
LAND-USE CONSULTANT
THREE6IXTY
4309 OVERLAND AVENUE
CULVER CITY, CA 90230

CIVIL ENGINEER CONSULTANT
FUSCOE ENGINEERING
600 WILSHIRE BLVD, SUITE 1470
LOS ANGELES, CA 90017

LIGHTING CONSULTANT
KGM ARCHITECTURAL LIGHTING
270 CORAL CIRCLE
EL SEGUNDO, CALIFORNIA

STRAND & PIER HOTEL HERMOSA BEACH

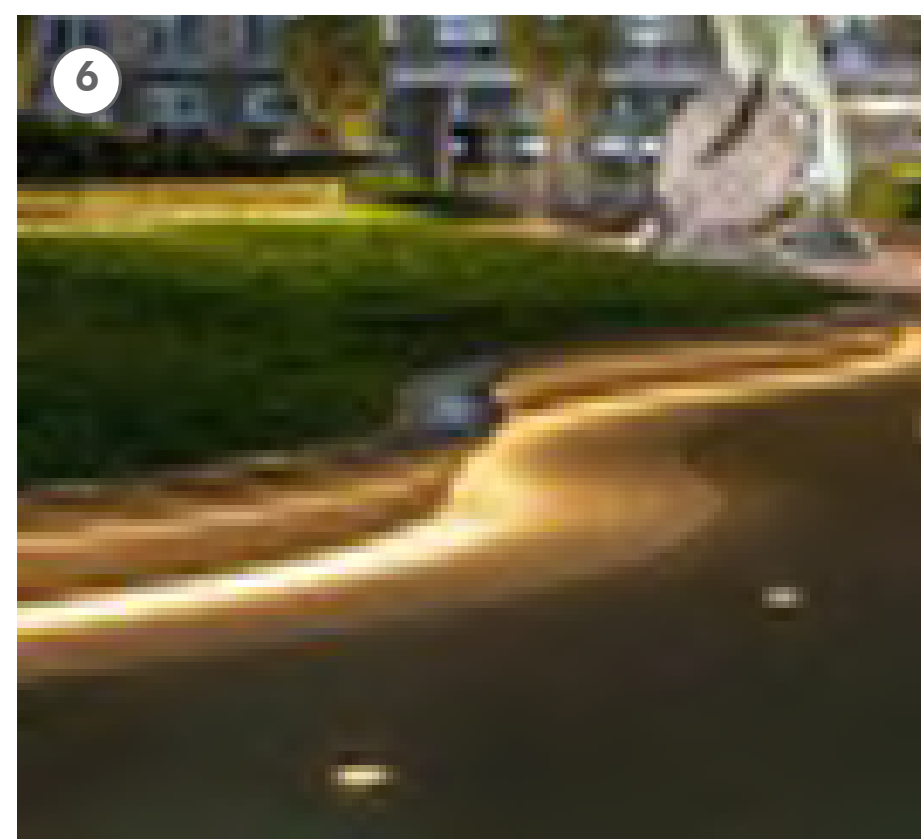
KEY MAP



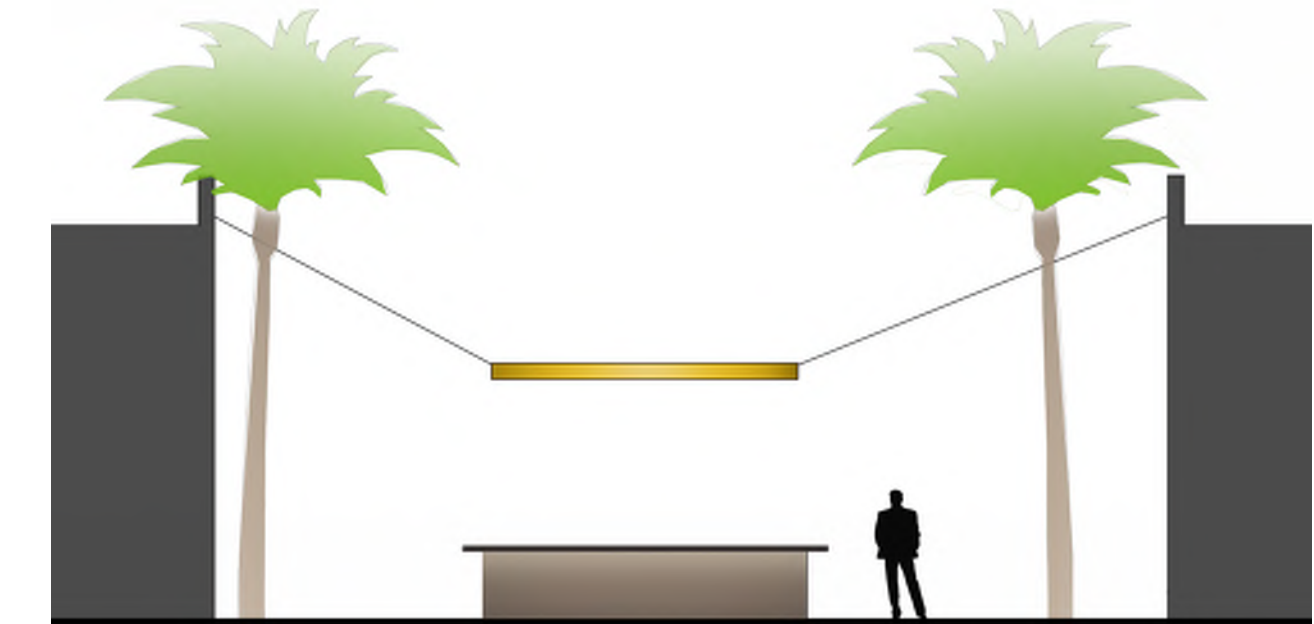
HKS PROJECT NUMBER
17377
DATE
MARCH 01, 2016
ISSUE
ENTITLEMENT SUBMITTAL
SHEET TITLE
FIRST FLOOR
ENLARGEMENT
LIGHTING PLAN
CONCEPTS
SHEET NO.

LT104

LEVEL 2 LIGHTING PLAN

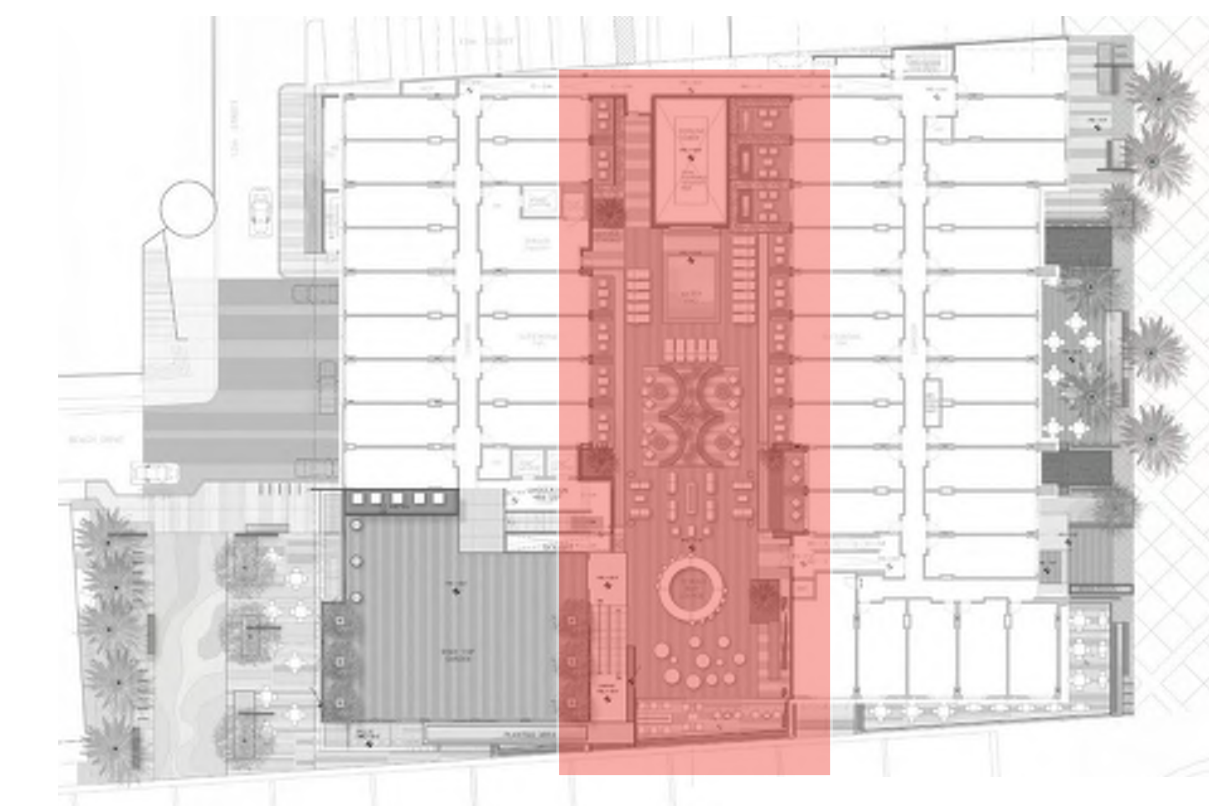


- 1 UPLIGHTING AT PALM TREES
- 2 LED POINT SOURCES INTEGRATED INTO LIVING WALLS
- 3 EXTERIOR RATED FLOOR LAMPS AT SEATING AREAS
- 4 UPLIGHTING AT TREES AND LANDSCAPE
- 5 LARGE CABLE SUSPENDED DECORATIVE RING FIXTURE OVER BAR
- 6 LINEAR LED LIGHTING AT UNDERSIDE OF BENCHES AND FIRE PITS
- 7 LOW LEVEL PATH LIGHTING IN PLANTERS TO LIGHT WALK
- 8 LINEAR INGRADE LED UPLIGHT AT GLASS RAILING
- 9 RECESSED LED DOWNLIGHTS
- 10 LINEAR LED AT UNDERSIDE OF BAR COUNTER TO WASH FASCIA
- 11 WALL MOUNTED SCNCE



SECTION A

KEY MAP



OWNER
STRAND & PIER HOLDING CO. LLC
8383 WILSHIRE BLVD, SUITE 920
BEVERLY HILLS, CA 90211

DEVELOPER
BOLOUR ASSOCIATES, INC.
8383 WILSHIRE BLVD, SUITE 920
BEVERLY HILLS, CA 90211

ARCHITECT
HKS ARCHITECTS, INC.
539 BRYANT STREET, SUITE 100
SAN FRANCISCO, CA 94107

STRUCTURAL ENGINEER
ENGLERKIRK STRUCTURAL ENGINEERS
888 S. FIGUEROA ST. 18TH FLOOR
LOS ANGELES, CA 90017

MEP
GLUMAC ENGINEERS
18200 VON KARMEN AVE - SUITE 100
IRVINE, CA 92612

LANDSCAPE ARCHITECT
AHBE
617 WEST 7TH STREET - SUITE 304
LOS ANGELES, CA 90017

HOTEL OPERATOR
PROVENCE HOTELS
U.S. BANCORP TOWER
111 SW 5TH AVE - SUITE 1001
PORTLAND, OR 97205

LAND-USE CONSULTANT
THREESIXTY
4309 OVERLAND AVENUE
CULVER CITY, CA 90230

CIVIL ENGINEER CONSULTANT
FUSCOE ENGINEERING
600 WILSHIRE BLVD, SUITE 1470
LOS ANGELES, CA 90017

LIGHTING CONSULTANT
KGM ARCHITECTURAL LIGHTING
270 CORAL CIRCLE
EL SEGUNDO, CALIFORNIA

STRAND & PIER HOTEL HERMOSA BEACH

HKS PROJECT NUMBER
17377

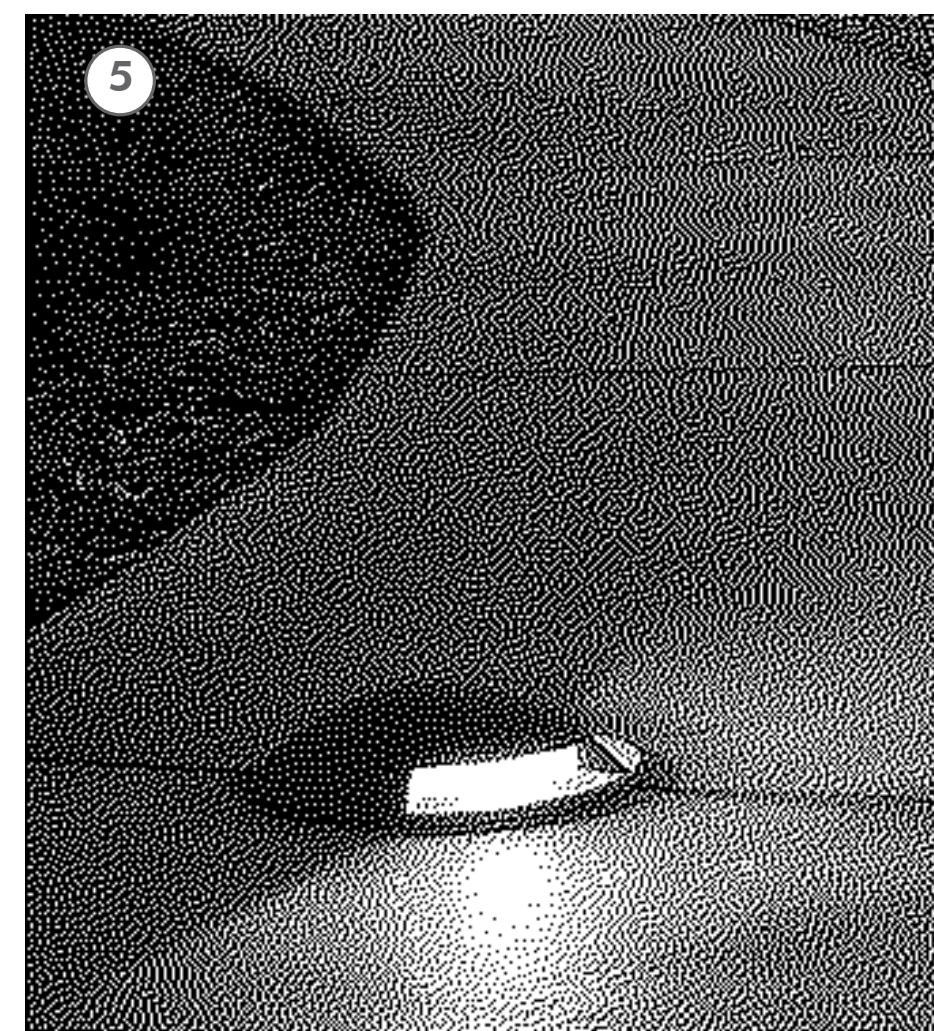
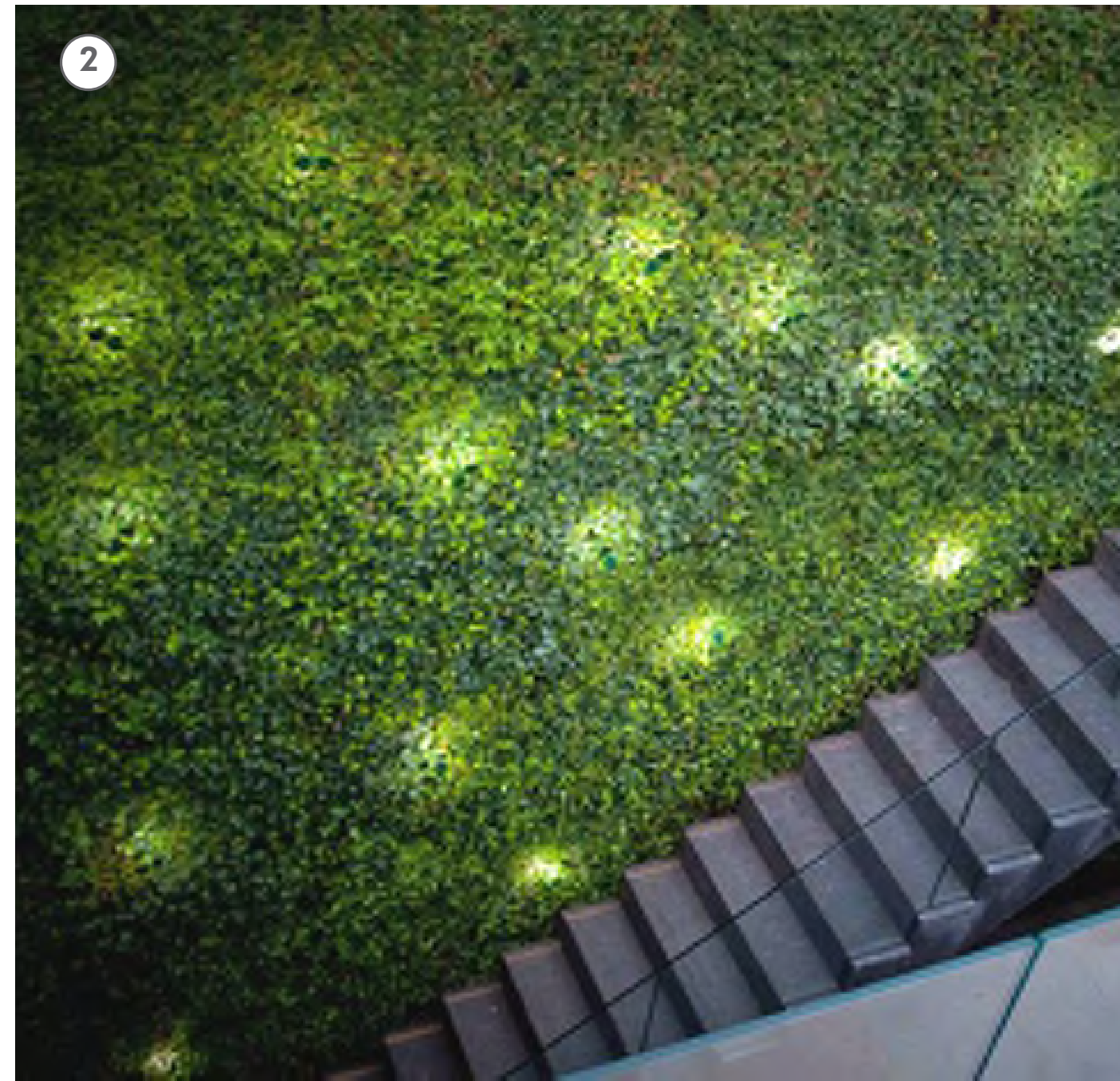
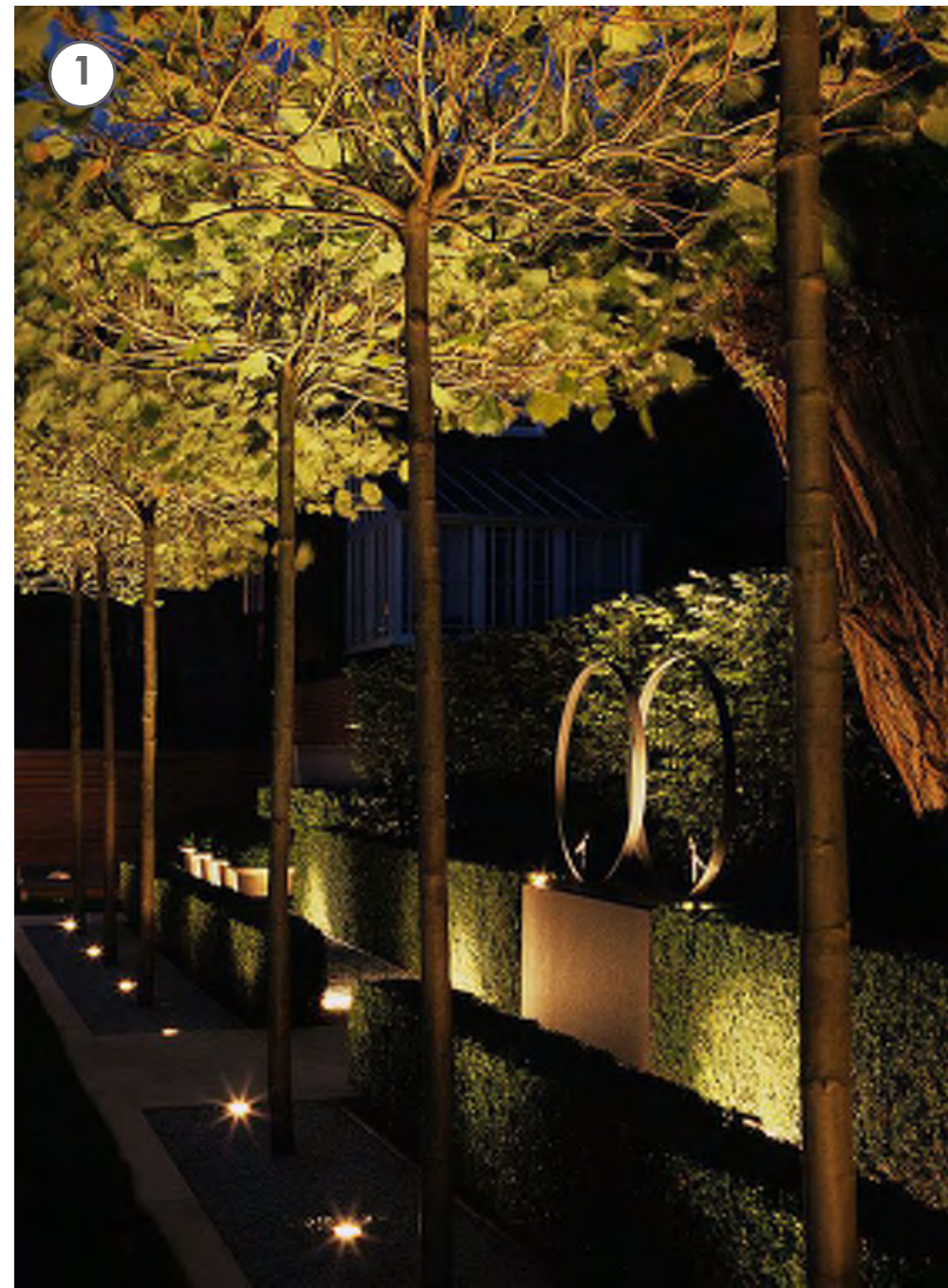
DATE
MARCH 01, 2016

ISSUE
ENTITLEMENT SUBMITTAL

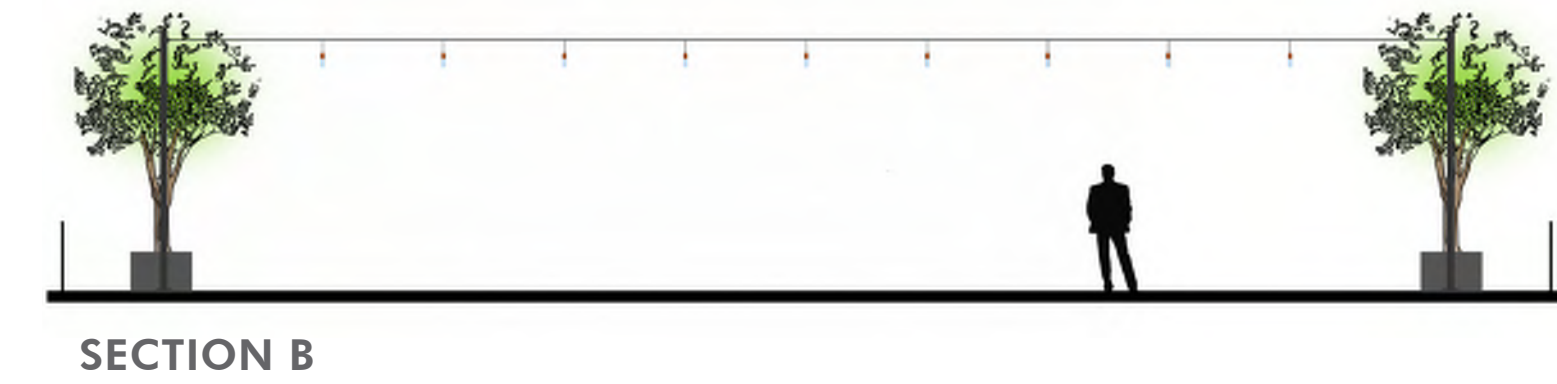
SHEET TITLE
OVERALL
SECOND FLOOR
LIGHTING PLAN
CONCEPTS

SHEET NO.
LT201

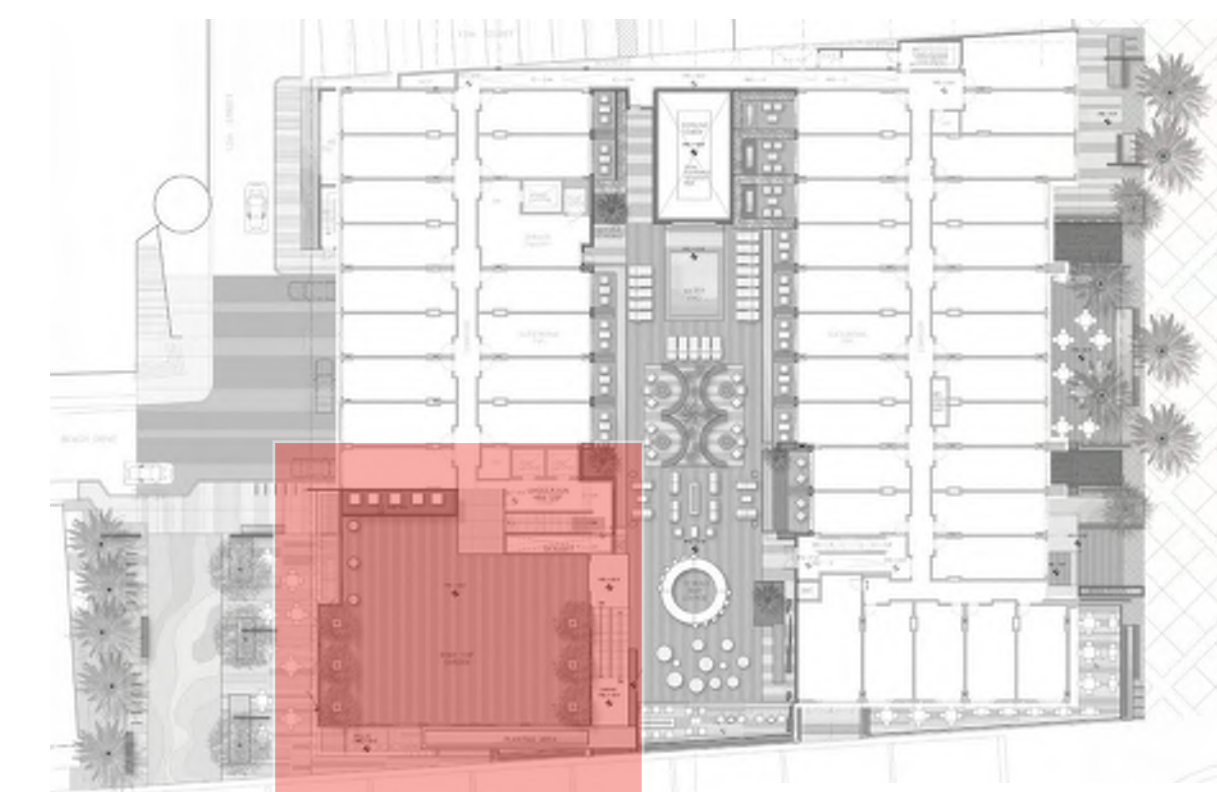
ROOF LIGHTING PLAN



- ① UPLIGHTING AT TREES
- ② LED POINT SOURCES INTEGRATED INTO LIVING WALLS
- ③ CABLE SUSPENDED CANTANARY FIXTURES
- ④ FLOOR MOUNTED PATH LIGHT
- ⑤ WALL MOUNTED SCNCE



KEY MAP



OWNER
STRAND & PIER HOLDING CO. LLC
8383 WILSHIRE BLVD, SUITE 920
BEVERLY HILLS, CA 90211

DEVELOPER
BOLOUR ASSOCIATES, INC.
8383 WILSHIRE BLVD, SUITE 920
BEVERLY HILLS, CA 90211

ARCHITECT
HKS ARCHITECTS, INC.
539 BRYANT STREET, SUITE 100
SAN FRANCISCO, CA 94107

STRUCTURAL ENGINEER
ENGLERKIRK STRUCTURAL ENGINEERS
888 S. FIGUEROA ST. 18TH FLOOR
LOS ANGELES, CA 90017

MEP
GLUMAC ENGINEERS
18200 VON KARMEN AVE - SUITE 100
IRVINE, CA 92612

LANDSCAPE ARCHITECT
AHBE
617 WEST 7TH STREET - SUITE 304
LOS ANGELES, CA 90017

HOTEL OPERATOR
PROVENCE HOTELS
U.S. BANCORP TOWER
111 SW 5TH AVE - SUITE 1001
PORTLAND, OR 97205

LAND-USE CONSULTANT
THREE6IXTY
4309 OVERLAND AVENUE
CULVER CITY, CA 90230

CIVIL ENGINEER CONSULTANT
FUSCOE ENGINEERING
600 WILSHIRE BLVD, SUITE 1470
LOS ANGELES, CA 90017

LIGHTING CONSULTANT
KGM ARCHITECTURAL LIGHTING
270 CORAL CIRCLE
EL SEGUNDO, CALIFORNIA

STRAND & PIER HOTEL HERMOSA BEACH

HKS PROJECT NUMBER
17377
DATE
MARCH 01, 2016
ISSUE
ENTITLEMENT SUBMITTAL
SHEET TITLE
OVERALL ROOF
LIGHTING PLAN
CONCEPTS

SHEET NO.
LT301