

**OWNER**  
STRAND & PIER HOLDING CO, LLC  
8383 WILSHIRE BLVD, SUITE 920  
BEVERLY HILLS, CA 90211

**DEVELOPER**  
BOLOUR ASSOCIATES, INC.  
8383 WILSHIRE BLVD, SUITE 920  
BEVERLY HILLS, CA 90211

**ARCHITECT**  
HKS ARCHITECTS, INC.  
539 BRYANT STREET, SUITE 100  
SAN FRANCISCO, CA 94107

**STRUCTURAL ENGINEER**  
ENGLERKIRK STRUCTURAL ENGINEERS  
888 S. FIGUEROA ST. 18TH FLOOR  
LOS ANGELES, CA 90017

**MEP**  
GLUMAC ENGINEERS  
18200 VON KARMEN AVE - SUITE 100  
IRVINE, CA 92612

**LANDSCAPE ARCHITECT**  
AHBE  
617 WEST 7TH STREET - SUITE 304  
LOS ANGELES, CA 90017

**HOTEL OPERATOR**  
PROVENANCE HOTELS  
U.S. BANCORP TOWER  
111 SW 5TH AVE - SUITE 1001  
PORTLAND, OR 97205

**LAND-USE CONSULTANT**  
THREE60TY  
4309 OVERLAND AVENUE  
CULVER CITY, CA 90230

**CIVIL ENGINEER CONSULTANT**  
FUSCOE ENGINEERING  
600 WILSHIRE BLVD, SUITE 1470  
LOS ANGELES, CA 90017

**LIGHTING CONSULTANT**  
KGM ARCHITECTURAL LIGHTING  
270 CORAL CIRCLE  
EL SEGUNDO, CALIFORNIA

## STRAND & PIER HOTEL HERMOSA BEACH

HKS PROJECT NUMBER

17377

DATE

MARCH 01, 2016

ISSUE

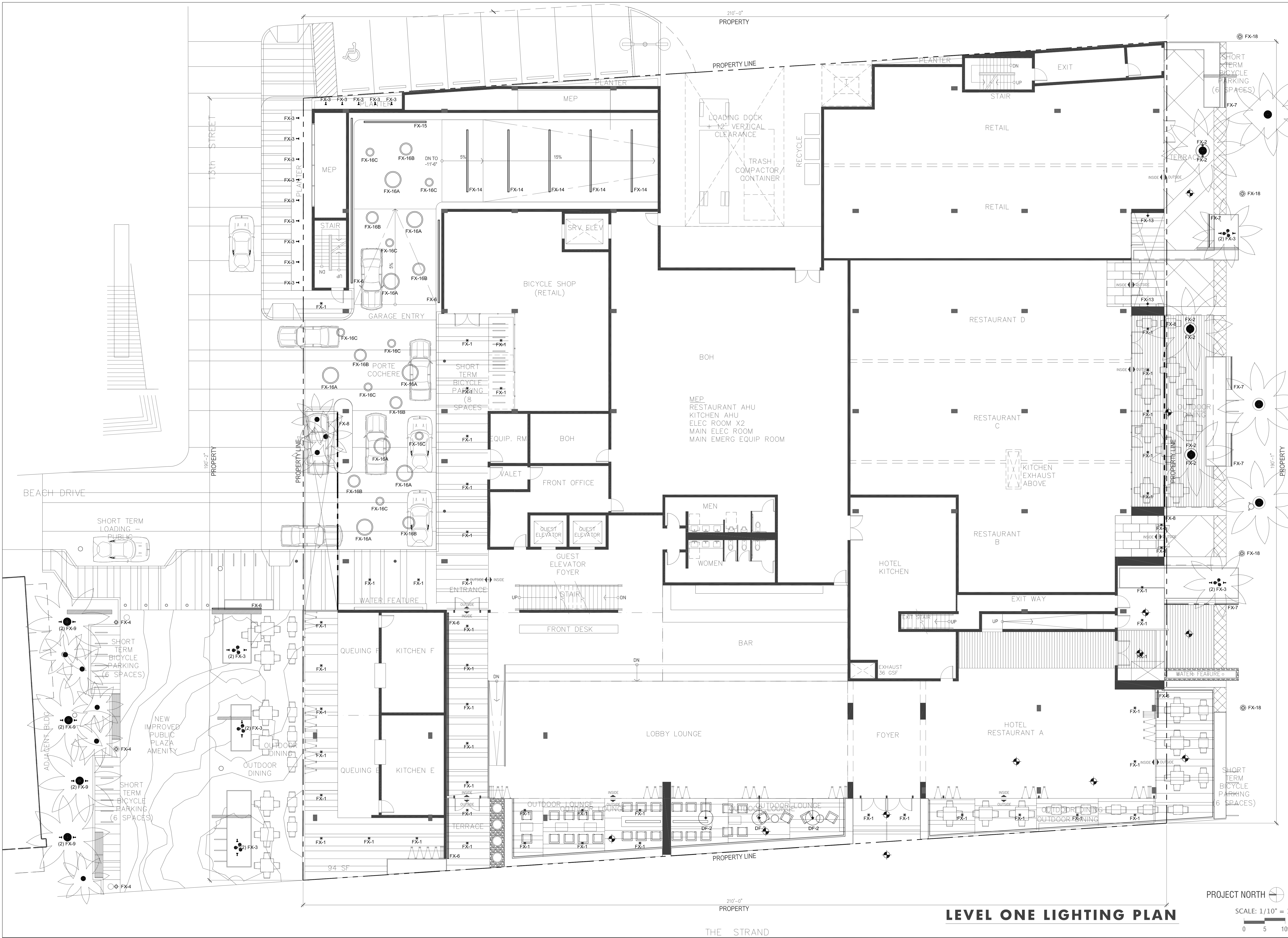
ENTITLEMENT SUBMITTAL

SHEET TITLE

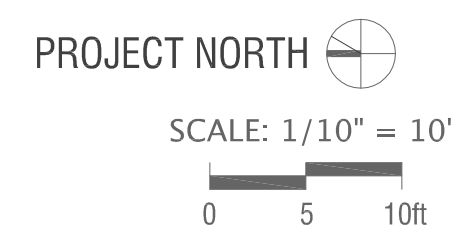
OVERALL FIRST FLOOR  
LIGHTING PLAN

SHEET NO.

**LT101.1**



**LEVEL ONE LIGHTING PLAN**





**OWNER**  
STRAND & PIER HOLDING CO. LLC  
8383 WILSHIRE BLVD, SUITE 920  
BEVERLY HILLS, CA 90211

**DEVELOPER**  
BOLOUR ASSOCIATES, INC.  
8383 WILSHIRE BLVD, SUITE 920  
BEVERLY HILLS, CA 90211

**ARCHITECT**  
HKS ARCHITECTS, INC.  
539 BRYANT STREET, SUITE 100  
SAN FRANCISCO, CA 94107

**STRUCTURAL ENGINEER**  
ENGLERKIRK STRUCTURAL ENGINEERS  
888 S. FIGUEROA ST. 18TH FLOOR  
LOS ANGELES, CA 90017

**MEP**  
GLUMAC ENGINEERS  
18200 VON KARMEN AVE - SUITE 100  
IRVINE, CA 92612

**LANDSCAPE ARCHITECT**  
AHBE  
617 WEST 7TH STREET - SUITE 304  
LOS ANGELES, CA 90017

**HOTEL OPERATOR**  
PROVENANCE HOTELS  
U.S. BANCORP TOWER  
111 SW 5TH AVE - SUITE 1001  
PORTLAND, OR 97205

**LAND-USE CONSULTANT**  
THREE60TY  
4309 OVERLAND AVENUE  
CULVER CITY, CA 90230

**CIVIL ENGINEER CONSULTANT**  
FUSCOE ENGINEERING  
600 WILSHIRE BLVD, SUITE 1470  
LOS ANGELES, CA 90017

**LIGHTING CONSULTANT**  
KGM ARCHITECTURAL LIGHTING  
270 CORAL CIRCLE  
EL SEGUNDO, CALIFORNIA

## STRAND & PIER HOTEL HERMOSA BEACH

HKS PROJECT NUMBER

17377

DATE

MARCH 01, 2016

ISSUE

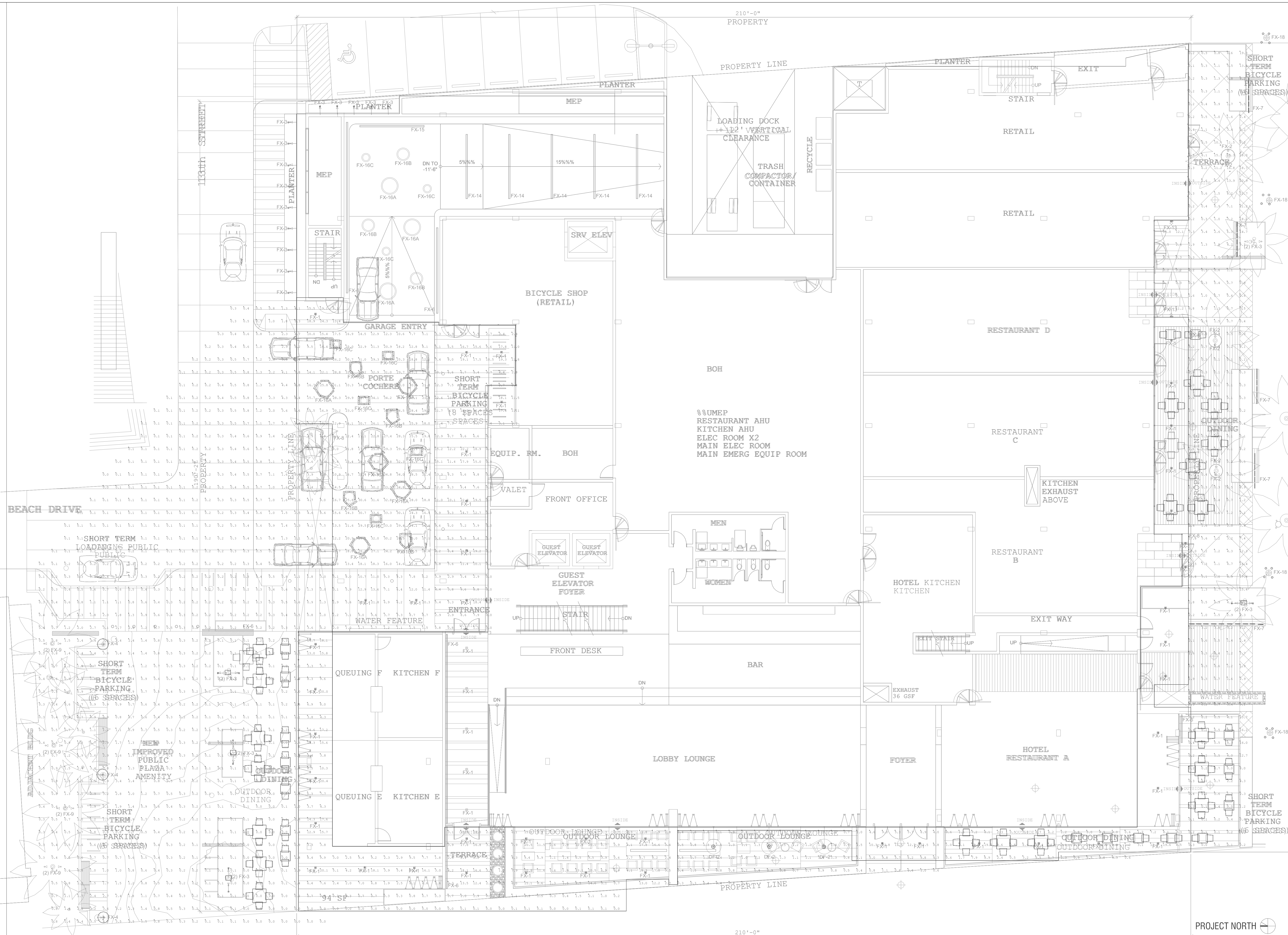
ENTITLEMENT SUBMITTAL

SHEET TITLE

OVERALL FIRST FLOOR  
LIGHTING PLAN-  
PHOTOMETRIC STUDY

SHEET NO.

### LT101.2



**LEVEL ONE LIGHTING PLAN - PHOTOMETRIC STUDY**

PROJECT NORTH

SCALE: 1/10" = 10'

0 5 10ft





**OWNER**  
STRAND & PIER HOLDING CO. LLC  
8383 WILSHIRE BLVD, SUITE 920  
BEVERLY HILLS, CA 90211

**DEVELOPER**  
BOLOUR ASSOCIATES, INC.  
8383 WILSHIRE BLVD, SUITE 920  
BEVERLY HILLS, CA 90211

**ARCHITECT**  
HKS ARCHITECTS, INC.  
539 BRYANT STREET, SUITE 100  
SAN FRANCISCO, CA 94107

**STRUCTURAL ENGINEER**  
ENGLERKIRK STRUCTURAL ENGINEERS  
888 S. FIGUEROA ST. 18TH FLOOR  
LOS ANGELES, CA 90017

**MEP**  
GLUMAC ENGINEERS  
18200 VON KARMEN AVE - SUITE 100  
IRVINE, CA 92612

**LANDSCAPE ARCHITECT**  
AHBE  
617 WEST 7TH STREET - SUITE 304  
LOS ANGELES, CA 90017

**HOTEL OPERATOR**  
PROVENANCE HOTELS  
U.S. BANCORP TOWER  
111 SW 5TH AVE - SUITE 1001  
PORTLAND, OR 97205

**LAND-USE CONSULTANT**  
THREE6IXTY  
4309 OVERLAND AVENUE  
CULVER CITY, CA 90230

**CIVIL ENGINEER CONSULTANT**  
FUSCOE ENGINEERING  
600 WILSHIRE BLVD, SUITE 1470  
LOS ANGELES, CA 90017

**LIGHTING CONSULTANT**  
KGM ARCHITECTURAL LIGHTING  
270 CORAL CIRCLE  
EL SEGUNDO, CALIFORNIA

## STRAND & PIER HOTEL HERMOSA BEACH

HKS PROJECT NUMBER

17377

DATE

MARCH 01, 2016

ISSUE

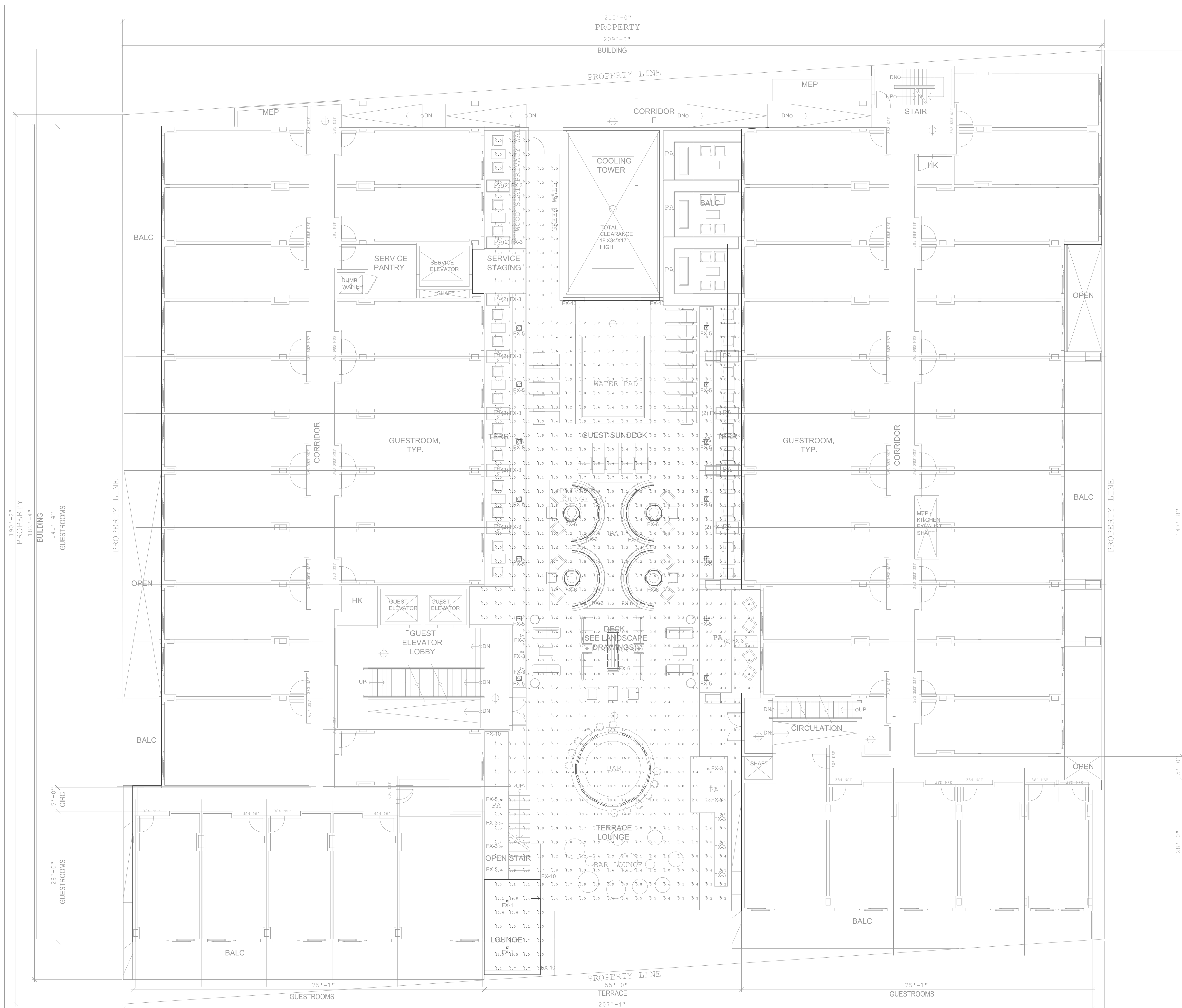
ENTITLEMENT SUBMITTAL

SHEET TITLE

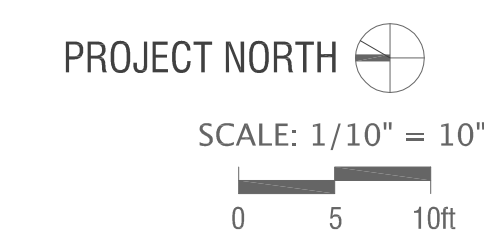
OVERALL SECOND  
FLOOR LIGHTING PLAN -  
PHOTOMETRIC STUDY

SHEET NO.

**LT201.2**



**LEVEL TWO TERRACE LIGHTING PLAN - PHOTOMETRIC STUDY**





**OWNER**  
STRAND & PIER HOLDING CO. LLC  
8383 WILSHIRE BLVD, SUITE 920  
BEVERLY HILLS, CA 90211

**DEVELOPER**  
BOLOUR ASSOCIATES, INC.  
8383 WILSHIRE BLVD, SUITE 920  
BEVERLY HILLS, CA 90211

**ARCHITECT**  
HKS ARCHITECTS, INC.  
539 BRYANT STREET, SUITE 100  
SAN FRANCISCO, CA 94107

**STRUCTURAL ENGINEER**  
ENGLERKIRK STRUCTURAL ENGINEERS  
888 S. FIGUEROA ST. 18TH FLOOR  
LOS ANGELES, CA 90017

**MEP**  
GLUMAC ENGINEERS  
18200 VON KARMEN AVE - SUITE 100  
IRVINE, CA 92612

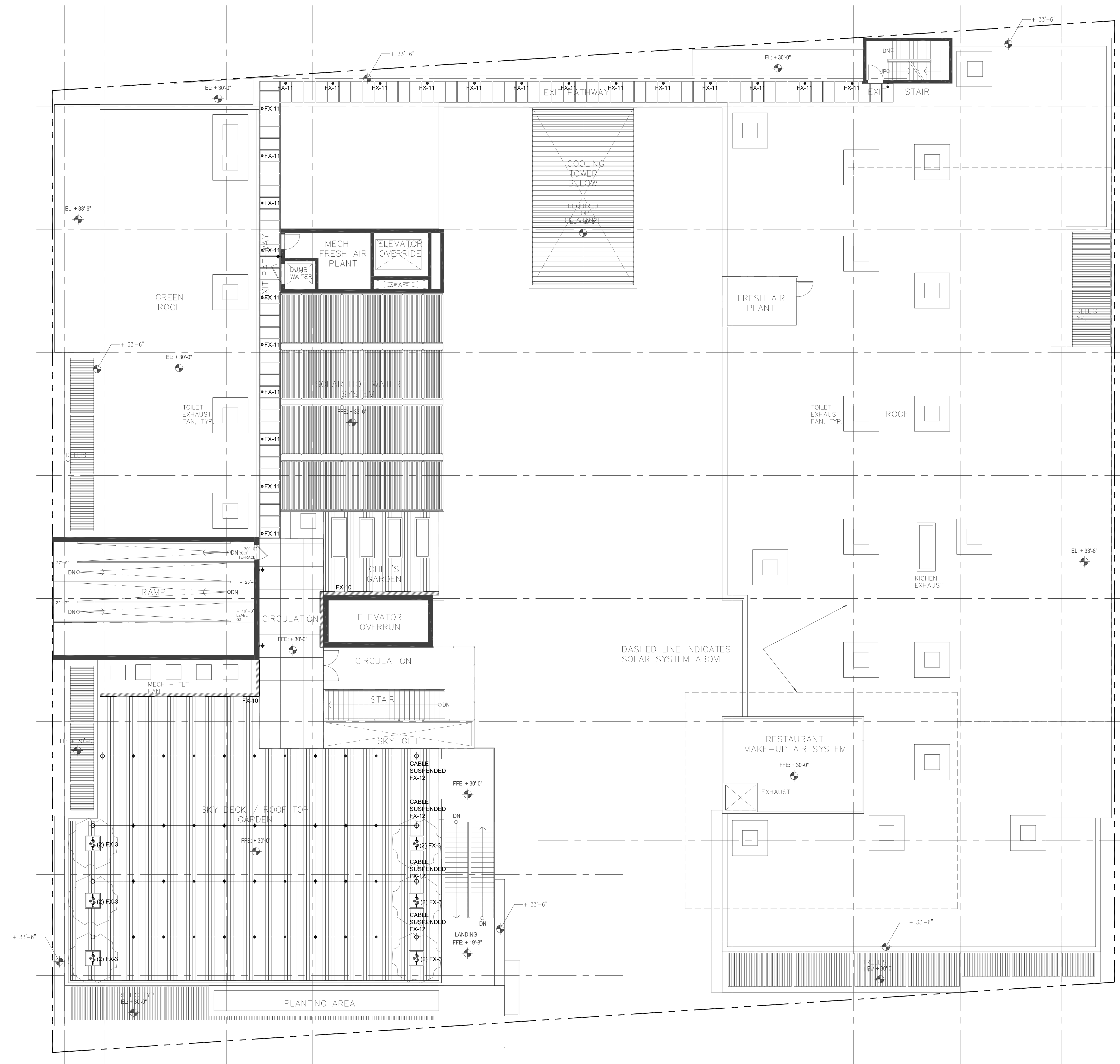
**LANDSCAPE ARCHITECT**  
AHBE  
617 WEST 7TH STREET - SUITE 304  
LOS ANGELES, CA 90017

**HOTEL OPERATOR**  
PROVENANCE HOTELS  
U.S. BANCORP TOWER  
111 SW 5TH AVE - SUITE 1001  
PORTLAND, OR 97205

**LAND-USE CONSULTANT**  
THREE6IXTY  
4309 OVERLAND AVENUE  
CULVER CITY, CA 90230

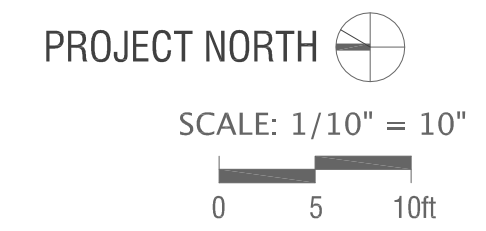
**CIVIL ENGINEER CONSULTANT**  
FUSCOE ENGINEERING  
600 WILSHIRE BLVD, SUITE 1470  
LOS ANGELES, CA 90017

**LIGHTING CONSULTANT**  
KGM ARCHITECTURAL LIGHTING  
270 CORAL CIRCLE  
EL SEGUNDO, CALIFORNIA



DASHED LINE INDICATES SOLAR SYSTEM ABOVE

## LEVEL THREE TERRACE LIGHTING PLAN



# STRAND & PIER HOTEL HERMOSA BEACH

HKS PROJECT NUMBER  
17377  
DATE  
MARCH 01, 2016  
ISSUE  
ENTITLEMENT SUBMITTAL  
SHEET TITLE  
OVERALL ROOF LIGHTING PLAN

SHEET NO.  
**LT301.1**

**OWNER**  
STRAND & PIER HOLDING CO. LLC  
8383 WILSHIRE BLVD, SUITE 920  
BEVERLY HILLS, CA 90211

**DEVELOPER**  
BOLOUR ASSOCIATES, INC.  
8383 WILSHIRE BLVD, SUITE 920  
BEVERLY HILLS, CA 90211

**ARCHITECT**  
HKS ARCHITECTS, INC.  
539 BRYANT STREET, SUITE 100  
SAN FRANCISCO, CA 94107

**STRUCTURAL ENGINEER**  
ENGLEKIRK STRUCTURAL ENGINEERS  
888 S. FIGUEROA ST. 18TH FLOOR  
LOS ANGELES, CA 90017

**MEP**  
GLUMAC ENGINEERS  
18200 VON KARMEN AVE - SUITE 100  
IRVINE, CA 92612

**LANDSCAPE ARCHITECT**  
AHBE  
617 WEST 7TH STREET - SUITE 304  
LOS ANGELES, CA 90017

**HOTEL OPERATOR**  
PROVENCE HOTELS  
U.S. BANCORP TOWER  
111 SW 5TH AVE - SUITE 1001  
PORTLAND, OR 97205

**LAND-USE CONSULTANT**  
THREE6IXTY  
4309 OVERLAND AVENUE  
CULVER CITY, CA 90230

**CIVIL ENGINEER CONSULTANT**  
FUSCOE ENGINEERING  
600 WILSHIRE BLVD, SUITE 1470  
LOS ANGELES, CA 90017

**LIGHTING CONSULTANT**  
KGM ARCHITECTURAL LIGHTING  
270 CORAL CIRCLE  
EL SEGUNDO, CALIFORNIA

## STRAND & PIER HOTEL HERMOSA BEACH

HKS PROJECT NUMBER

17377

DATE

MARCH 01, 2016

ISSUE

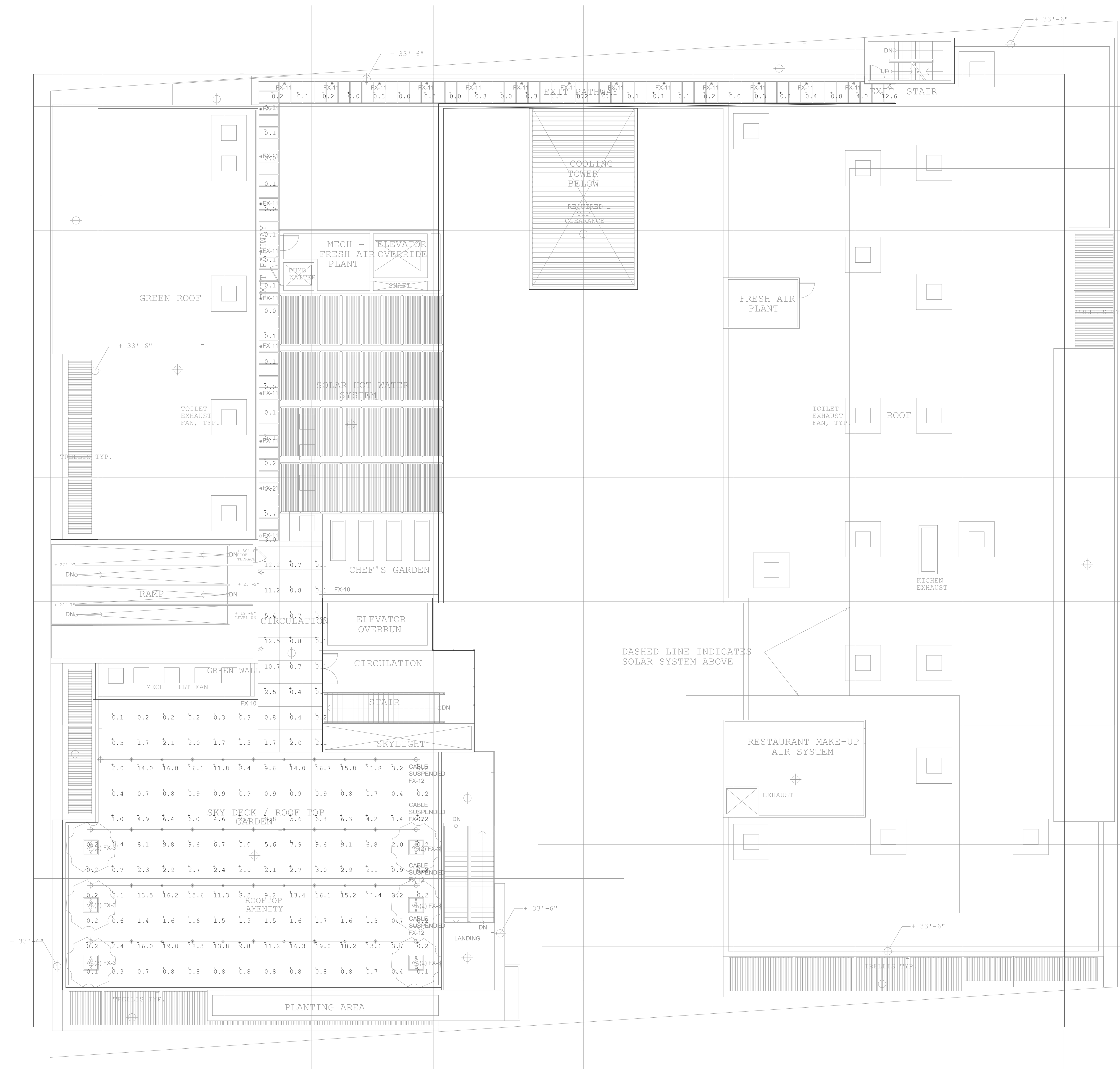
ENTITLEMENT SUBMITTAL

SHEET TITLE



OVERALL ROOF  
LIGHTING PLAN -  
PHOTOMETRIC STUDY

SHEET NO.

**LT301.2**



**LEVEL THREE TERRACE LIGHTING PLAN - PHOTOMETRIC STUDY**

PROJECT NORTH   
SCALE: 1/10" = 10"  




LIGHTING FIXTURE SCHEDULE:

	TYPE	MANUFACTURER	MODEL NUMBER	LAMP	DESCRIPTION
	FX-1	AMERLUX	HORNET HP DOWNLIGHT HDL-HP-S-A14-20-LED-VOLTAGE TO BE CONFIRMED BY ELECTRICAL ENGINEER-D-10V-HDL-HP-SD-A14-MWW-WF-3500	20W LED 3500K	RECESSED SQUARE LED DOWNLIGHT
	FX-2	LUMASCAPE	LS853LED-20H6-A-N (BRUSHED STAINLESS STEEL) CONTRACTOR TO COORDINATE CONNECTION TYPE: ME-29-Q-08A-56012 (CROSS HATCH LOUVER) *VERIFY FINISH WITH DESIGN TEAM	21W LED 3000K FL30"	LED INGRADE UPLIGHT AT PALMS
	FX-3	HEVILITE	HL-920-BZ (POWDER COATED BRONZE) - L40-30-FL-VOLTAGE TO BE CONFIRMED BY ELECTRICAL ENGINEER LA-4-920 (SOFT FOCUS LENS) *VERIFY FINISH WITH DESIGN TEAM CONTRACTOR TO PROVIDE ALL PARTS AND COMPONENTS FOR A COMPLETE OPERABLE AND DIMMING SYSTEM	18.9W LED 3000K FL40"	STAKE MOUNTED LED UPLIGHT
	FX-4	BEGA	7208LED - BRZ (BRONZE) *VERIFY FINISH WITH DESIGN TEAM	36.4W LED 3000K	PEDESTRIAN SCALE FIXTURE ON 15' POLE
	FX-5	FOCUS INDUSTRIES	PL-23 SERIES PL-23-34LEDPBLT-BRT (BRONZE TEXTURE) - 277-A-26 (MOUNTING POST) *VERIFY FINISH WITH DESIGN TEAM	4W LED 3000K	PATH LIGHT
	FX-6	LED LINEAR	VARIOLED OCEANOS 316S-W027LENGTH AS REQUIRED FOR CONTINUOUS RUNS-IP67	3.2W/FT LED 3000K	INGRADE LINEAR LED UPLIGHT
	FX-7	CALIFORNIA ACCENT LIGHTING	NEON LEDS NLED-1.8W-LED-3.0K-VOLTAGE TO BE CONFIRMED BY ELECTRICAL ENGINEER-LENGTH AS REQUIRED FOR CONTINUOUS RUN CONTRACTOR TO PROVIDE ALL PARTS AND COMPONENTS FOR A COMPLETE OPERABLE AND DIMMING SYSTEM	1.8W/FT LED 3000K	SURFACE MOUNTED CURVABLE LINEAR LED WET LISTED
	FX-8	CALIFORNIA ACCENT LIGHTING	ALS210T-F (FROSTED LENS)-NA-LED-3.0K-1200-3W-0-10V-MO-FEED POINT TO BE CONFIRMED BY INSTALLING CONTRACTOR-DRY-LINE VOLTAGE (VOLTAGE TO BE CONFIRMED BY ELECTRICAL ENGINEER)-LENGTHS AS REQUIRED FOR CONTINUOUS RUNS CONTRACTOR TO PROVIDE ALL PARTS AND COMPONENTS FOR A COMPLETE OPERABLE AND DIMMING SYSTEM	3W/ FT LED 3000K	SURFACE MOUNTED LINEAR LED UPLIGHT
	FX-9	HEVILITE	HL-925-BZ (POWDER COATED BRONZE) - L50-30-FL-VOLTAGE TO BE CONFIRMED BY ELECTRICAL ENGINEER LA-4-30 (SOFT FOCUS LENS) *VERIFY FINISH WITH DESIGN TEAM CONTRACTOR TO PROVIDE ALL PARTS AND COMPONENTS FOR A COMPLETE OPERABLE AND DIMMING SYSTEM	29.3W 3000K	STAKE MOUNTED LED UPLIGHT AT PALMS
	FX-10	LUMENPULSE	LUMENDOME LMDN-48V-30K-WH (WHITE)-DMX/RDM-WW-FTL (FLAT LENS) *VERIFY FINISH WITH DESIGN TEAM CONTRACTOR TO PROVIDE ALL PARTS AND COMPONENTS FOR A COMPLETE OPERABLE AND DIMMING SYSTEM	2W LED 3000K	INTEGRATED POINT SOURCE LED AT GREEN WALLS
	FX-11	AURORA LIGHT	SONOMA LDM350-180-300-CONTRACTOR TO CONFIRM MOUNTING OPTION-BLP (BRONZE LIVING PATINA) *VERIFY FINISH WITH DESIGN TEAM CONTRACTOR TO PROVIDE ALL PARTS AND COMPONENTS FOR A COMPLETE OPERABLE AND DIMMING SYSTEM	4W LED 3000K	INGRADE PATH LIGHT
	FX-12	AURORA LIGHT	CANDELA LHL50-290-BLP (BRONZE LIVING PATINA) *VERIFY FINISH WITH DESIGN TEAM CONTRACTOR TO PROVIDE ALL PARTS AND COMPONENTS FOR A COMPLETE OPERABLE AND DIMMING SYSTEM	2.5W LED 2900K	CABLE MOUNTED FIXTURE
	FX-13	BEGA	3242LED-BRZ (BRONZE) *VERIFY FINISH WITH DESIGN TEAM	26W LED 3000K	SURFACE MOUNTED DOWNLIGHT
	FX-14	AXIS	BMSLED-B3-MF-400-80-30-SD-15-AP (ALUMINUM PAINT)- VOLTAGE TO BE CONFIRMED BY ELECTRICAL ENGINEER-D-1-S *VERIFY FINISH WITH DESIGN TEAM CONTRACTOR TO PROVIDE ALL PARTS AND COMPONENTS FOR A COMPLETE OPERABLE AND DIMMING SYSTEM	3.3W/FT LED 3000K	SURFACE MOUNTED LINEAR LED

	FX-15	AXIS	BMRLED-B3-MF-400-80-30-ASO-15-W (WHITE)-VOLTAGE TO BE CONFIRMED BY ELECTRICAL ENGINEER-D (DRYWALL FLANGELESS) *VERIFY FINISH WITH DESIGN TEAM CONTRACTOR TO PROVIDE ALL PARTS AND COMPONENTS FOR A COMPLETE OPERABLE AND DIMMING SYSTEM	5.5W/FT LED 3000K	RECESSED LINEAR LED WALL GRAZER
	FX-16 (A-C)	AXIS	SKETCH SK-DIAMETER PER PLAN - B3-MF-CR-NOMINAL LENGTH AS NEEDED- 400-80-30-S0W(WHITE)-VOLTAGE TO BE CONFIRMED BY ELECTRICAL ENGINEER-D-1-DP *VERIFY FINISH WITH DESIGN TEAM CONTRACTOR TO PROVIDE ALL PARTS AND COMPONENTS FOR A COMPLETE OPERABLE AND DIMMING SYSTEM FX-16A: 24" DIAMETER FX-16B: 36" DIAMETER FX-16A: 48" DIAMETER	4.8W/FT LED 3000K	RECESSED LED RINGS
	FX-17	BK LIGHTING	DELTA STAR DS-LED-E22-WFL-A9-B2P (BRONZE)-11 (HONEYCOMB BAFFLE)-A (CAP STYLE A)-TS (TREE STRAP)-TMC-B2P (BRONZE)-12" (ADJUSTABLE STRAP) *VERIFY FINISH WITH DESIGN TEAM CONTRACTOR TO PROVIDE ALL PARTS AND COMPONENTS FOR A COMPLETE OPERABLE AND DIMMING SYSTEM	SORAA VIVID SERIES 9W LED MR16 3000K SM16-69-36D-930-03	TREE MOUNTED MOONLIGHTING AIMED DOWN
	FX-18	SELUX	OLIVIO MEDIO LED (4)OLM-F40-SB4 (FIXTURE HEADS)EXACT MOUNTING LOCATIONS TO BE DETERMINED)-L46-30-SV (SILVER)- VOLTAGE TO BE CONFIRMED BY ELECTRICAL ENGINEER - DM POLE: O-ATS35-156-12-SV (SILVER) - RN - BC5 *VERIFY FINISH WITH DESIGN TEAM	(4) 46W LED 3000K	SECURITY FLOODLIGHTS ON 12' POLE
	DF-1	TBD	TBD	TBD	PENDANT MOUNTED EXTERIOR RATED DECORATIVE FIXTURE ABOVE BAR
	DF-2	TBD	TBD	TBD	WALL MOUNTED EXTERIOR RATED DECORATIVE FIXTURES AT GROUND FLOOR TERRACE
	DF-3	VIBIA	PLUS OUTDOOR 4030-03 (WHITE LACQUER)	52W (26W EACH) 2 x PL-T GX24Q-3 TRIPLE TUBE	EXTERIOR RATED FLOOR LAMPS

# HKS

**OWNER**  
STRAND & PIER HOLDING CO. LLC  
8383 WILSHIRE BLVD, SUITE 920  
BEVERLY HILLS, CA 90211

**DEVELOPER**  
BOLOUR ASSOCIATES, INC.  
8383 WILSHIRE BLVD, SUITE 920  
BEVERLY HILLS, CA 90211

**ARCHITECT**  
HKS ARCHITECTS, INC.  
539 BRYANT STREET, SUITE 100  
SAN FRANCISCO, CA 94107

**STRUCTURAL ENGINEER**  
ENGLERKIRK STRUCTURAL ENGINEERS  
888 S. FIGUEROA ST., 18TH FLOOR  
LOS ANGELES, CA 90017

**MEP**  
GLUMAC ENGINEERS  
18200 VON KARMEN AVE - SUITE 100  
IRVINE, CA 92612

**LANDSCAPE ARCHITECT**  
AHBE  
617 WEST 7TH STREET - SUITE 304  
LOS ANGELES, CA 90017

**HOTEL OPERATOR**  
PROVANCE HOTELS  
U.S. BANCORP TOWER  
111 SW 5TH AVE - SUITE 1001  
PORTLAND, OR 97205

**LAND-USE CONSULTANT**  
THREEDIXTY  
4309 OVERLAND AVENUE  
CULVER CITY, CA 90230

**CIVIL ENGINEER CONSULTANT**  
FUSCOE ENGINEERING  
600 WILSHIRE BLVD, SUITE 1470  
LOS ANGELES, CA 90017

**LIGHTING CONSULTANT**  
KGM ARCHITECTURAL LIGHTING  
270 CORAL CIRCLE  
EL SEGUNDO, CALIFORNIA

## STRAND & PIER HOTEL HERMOSA BEACH

HKS PROJECT NUMBER

17377

DATE

MARCH 01, 2016

ISSUE

ENTITLEMENT SUBMITTAL

SHEET TITLE

LIGHTING FIXTURE  
SCHEDULE

SHEET NO.

### LT400