

BOUNDARY OF PROPOSED GREENWICH VILLAGE NORTH UNDERGROUND UTILITIES ASSESSMENT DISTRICT

CITY OF HERMOSA BEACH, COUNTY OF LOS ANGELES
STATE OF CALIFORNIA

FILED IN THE OFFICE OF THE CITY CLERK OF HERMOSA BEACH,
THIS ____ DAY OF _____, 20 ____.

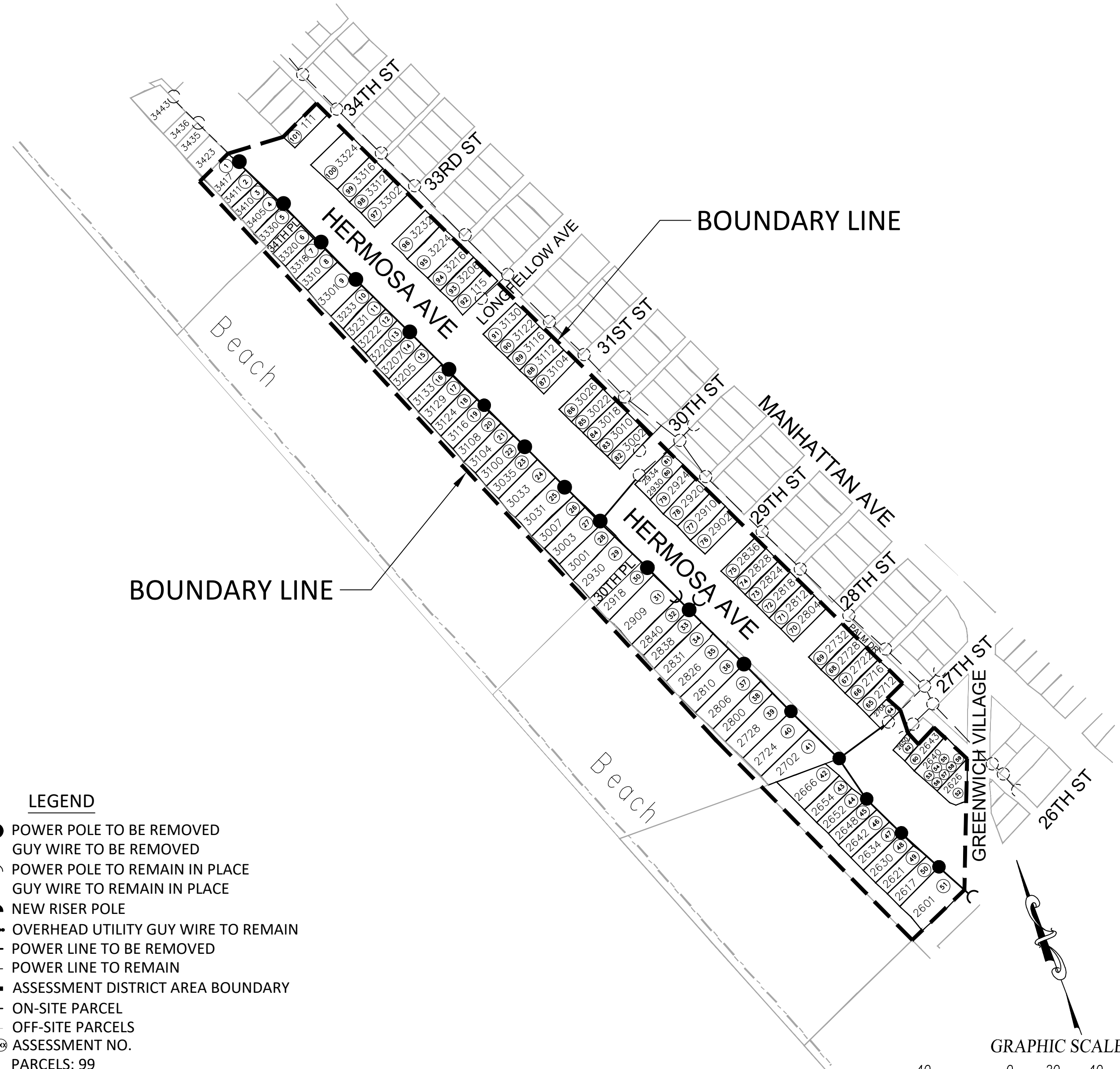
CITY CLERK
CITY OF HERMOSA BEACH

I HEREBY CERTIFY THAT THE WITHIN MAP SHOWING PROPOSED BOUNDARIES OF GREENWICH VILLAGE NORTH UNDERGROUND UTILITIES ASSESSMENT DISTRICT, CITY OF HERMOSA BEACH, STATE OF CALIFORNIA, WAS APPROVED BY THE CITY COUNCIL OF THE CITY OF HERMOSA BEACH AT A REGULAR MEETING THEREOF, HELD ON THE ____ DAY OF _____, 20 ____, BY ITS RESOLUTION NO. _____

FILED THIS ____ DAY OF _____, 20 ____, AT THE HOUR OF ____ O'CLOCK ____ M. IN BOOK ____ OF MAPS OF ASSESSMENT AND COMMUNITY FACILITIES DISTRICTS AT PAGE ____, IN THE OFFICE OF THE COUNTY RECORDER IN THE COUNTY OF LOS ANGELES, STATE OF CALIFORNIA.

COUNTY RECORDER OF COUNTY OF LOS ANGELES

NOTE: FOR PARTICULARS OF THE LINES AND DIMENSIONS OF ASSESSOR'S PARCELS, REFERENCE IS MADE TO THE MAPS OF THE LOS ANGELES COUNTY ASSESSOR, WHICH MAPS SHALL GOVERN FOR ALL DETAILS RELATING THERETO.



- LEGEND**
- POWER POLE TO BE REMOVED
 - ← GUY WIRE TO BE REMOVED
 - POWER POLE TO REMAIN IN PLACE
 - ← GUY WIRE TO REMAIN IN PLACE
 - NEW RISER POLE
 - OVERHEAD UTILITY GUY WIRE TO REMAIN
 - POWER LINE TO BE REMOVED
 - POWER LINE TO REMAIN
 - - - ASSESSMENT DISTRICT AREA BOUNDARY
 - ON-SITE PARCEL
 - OFF-SITE PARCELS
 - ⊙ ASSESSMENT NO.
- PARCELS: 99
TRENCHING IN STREET: 3,000 LF
POWER POLES TO BE REMOVED: 18

